

## Product datasheet for **AP06571PU-N**

### PLCG 2 (PLCG2) Rabbit Polyclonal Antibody

#### Product data:

<b>Product Type:</b>	Primary Antibodies
<b>Applications:</b>	IHC, WB
<b>Recommended Dilution:</b>	<b>Western blot:</b> 1/500–1/1000. <b>Immunohistochemistry on Paraffin Sections:</b> 1/50–1/200.
<b>Reactivity:</b>	Human, Mouse, Rat
<b>Host:</b>	Rabbit
<b>Clonality:</b>	Polyclonal
<b>Immunogen:</b>	Synthetic peptide, corresponding to amino acids 1180–1230 of Human PLC $\gamma$ 2.
<b>Specificity:</b>	This antibody detects endogenous levels of PLCG2 protein. (region surrounding asn1211)
<b>Formulation:</b>	Phosphate buffered saline (PBS), pH 7.2 State: Aff – Purified State: Liquid purified Ig fraction (> 95% pure by SDS-PAGE). Preservative: 0.05% Sodium Azide
<b>Concentration:</b>	1.0 mg/ml
<b>Purification:</b>	Affinity Chromatography using epitope-specific immunogen.
<b>Conjugation:</b>	Unconjugated
<b>Storage:</b>	Store undiluted at 2–8°C for one month or (in aliquots) at –20°C for longer. Avoid repeated freezing and thawing.
<b>Stability:</b>	Shelf life: one year from despatch.
<b>Predicted Protein Size:</b>	~ 148 kDa
<b>Gene Name:</b>	phospholipase C gamma 2
<b>Database Link:</b>	<a href="#">Entrez Gene 5336 Human P16885</a>



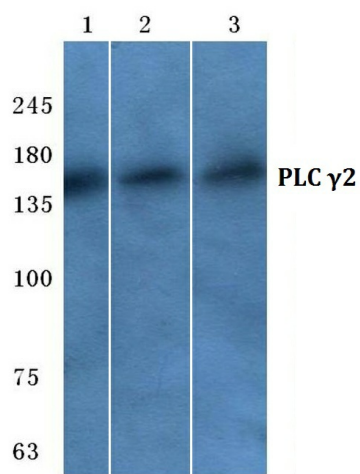
**Background:**

Phosphoinositide-specific phospholipase C (PLC) plays a crucial role in the initiation of receptor mediated signal transduction through the generation of the two second messengers, inositol 1,4,5-triphosphate and diacylglycerol from phosphatidylinositol 4,5-bisphosphate. There are many mammalian PLC isozymes, including PLC  $\beta$ 1, PLC  $\beta$ 2, PLC  $\beta$ 3, PLC  $\beta$ 4, PLC $\gamma$ 1, PLC $\gamma$ 2, PLC  $\delta$ 1, PLC  $\delta$ 2 and PLC $\epsilon$ . PLC $\delta$  exists as four different isoforms. PLC  $\delta$ 1, a calcium signal amplifier, is activated by an atypical GTP-binding protein. In addition, PLC  $\delta$ 1 is an effector for GTP-binding protein transglutaminase II-mediated oxytocin receptor and  $\alpha$ 1B-adrenoreceptor signaling. Mouse PLC  $\delta$ 1 is highly expressed in brain, heart, lung and testis.

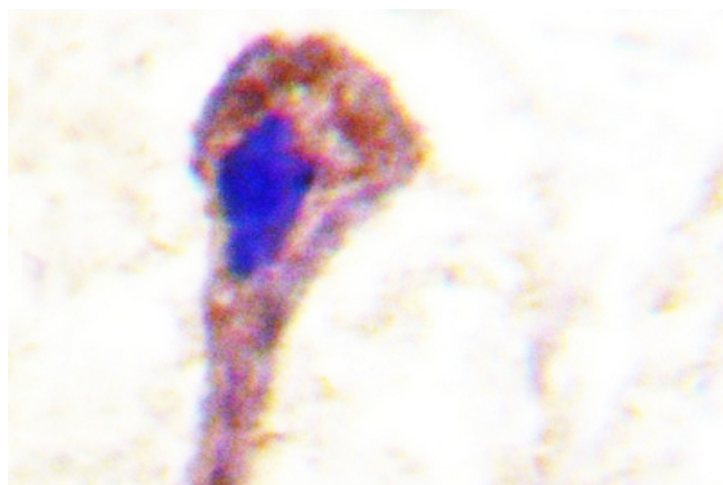
**Synonyms:**

Phospholipase C-gamma-2, PLC-gamma-2, Phospholipase C-IV, PLC-IV

**Product images:**



Western blot (WB) analysis of PLC  $\gamma$ 2 antibody at 1/500 dilution Lane 1:Hela whole cell lysate Lane 2:sp2/0 whole cell lysate Lane 3:Rat lung tissue lysate



Immunohistochemistry (IHC) analyzes of PLCG2 antibody in paraffin-embedded human breast tissue.