

## Product datasheet for **AP06570PU-N**

### Protein Kinase D2 (PRKD2) Rabbit Polyclonal Antibody

#### Product data:

|                         |   |
|-------------------------|---|
| Product Type:           | Primary Antibodies  |
| Applications:           | ELISA, IHC, WB  |
| Recommended Dilution:   | <b>Western blot:</b> 1/500-1/1000.<br><b>Immunohistochemistry on paraffin sections</b> 1/50-1/200.  |
| Reactivity:             | Human, Mouse, Rat   |
| Host:                   | Rabbit  |
| Clonality:              | Polyclonal  |
| Immunogen:              | Synthetic peptide, corresponding to amino acids 840-890 of Human PKD2.  |
| Specificity:            | This antibody detects endogenous levels of PKD2 protein.<br>(region surrounding Ala872)   |
| Formulation:            | Phosphate buffered saline (PBS), pH~7.2<br>State: Aff - Purified<br>State: Liquid purified IgG fraction (> 95% pure by SDS-PAGE)<br>Preservative: 0.05% Sodium Azide          |
| Concentration:          | 1.0 mg/ml   |
| Purification:           | Affinity Chromatography using epitope-specific immunogen  |
| Conjugation:            | Unconjugated  |
| Storage:                | Store undiluted at 2-8°C for one month or (in aliquots) at -20°C for longer.<br>Avoid repeated freezing and thawing.  |
| Stability:              | Shelf life: one year from despatch.   |
| Predicted Protein Size: | ~96 kDa   |
| Gene Name:              | protein kinase D2   |
| Database Link:          | <u><a href="#">Entrez Gene 101540 Mouse</a></u> <u><a href="#">Entrez Gene 292658 Rat</a></u> <u><a href="#">Entrez Gene 25865 Human</a></u><br><u><a href="#">Q9BZL6</a></u> |



[View online »](#)

**Background:**

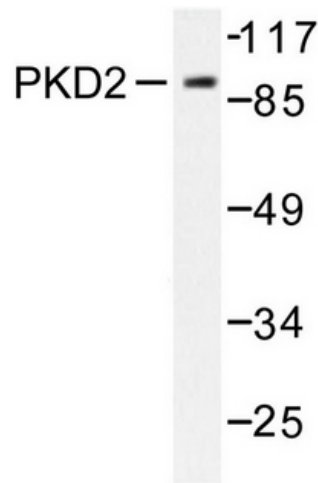
The protein encoded by this gene belongs to the protein kinase D (PKD) family of serine/threonine protein kinases. This kinase can be activated by phorbol esters as well as by gastrin via the cholecystinin B receptor (CCKBR) in gastric cancer cells. It can bind to diacylglycerol (DAG) in the trans-Golgi network (TGN) and may regulate basolateral membrane protein exit from TGN. Alternative splicing results in multiple transcript variants encoding different isoforms.

**Synonyms:**

PKC-D2, nPKC-D2, HSPC187

**Protein Families:**

Druggable Genome, Protein Kinase

**Product images:**

Western blot analysis of PKD2 Antibody in extracts from NIH/3T3 cells treated with PMA 250ng/ml 15'.