

Product datasheet for **AP06570PU-M**

Protein Kinase D2 (PRKD2) Rabbit Polyclonal Antibody

Product data:

Product Type:	Primary Antibodies
Applications:	ELISA, IHC, WB
Recommended Dilution:	Western blot: 1/500-1/1000. Immunohistochemistry on paraffin sections 1/50-1/200.
Reactivity:	Human, Mouse, Rat
Host:	Rabbit
Clonality:	Polyclonal
Immunogen:	Synthetic peptide, corresponding to amino acids 840-890 of Human PKD2.
Specificity:	This antibody detects endogenous levels of PKD2 protein. (region surrounding Ala872)
Formulation:	Phosphate buffered saline (PBS), pH~7.2 State: Aff - Purified State: Liquid purified IgG fraction (> 95% pure by SDS-PAGE) Preservative: 0.05% Sodium Azide
Concentration:	1.0 mg/ml
Purification:	Affinity Chromatography using epitope-specific immunogen
Conjugation:	Unconjugated
Storage:	Store undiluted at 2-8°C for one month or (in aliquots) at -20°C for longer. Avoid repeated freezing and thawing.
Stability:	Shelf life: one year from despatch.
Predicted Protein Size:	~96 kDa
Gene Name:	protein kinase D2
Database Link:	<u>Entrez Gene 101540 Mouse</u> <u>Entrez Gene 292658 Rat</u> <u>Entrez Gene 25865 Human</u> <u>Q9BZL6</u>

[View online »](#)

Background:

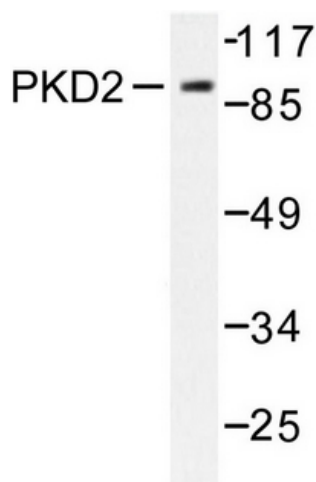
The protein encoded by this gene belongs to the protein kinase D (PKD) family of serine/threonine protein kinases. This kinase can be activated by phorbol esters as well as by gastrin via the cholecystokinin B receptor (CCKBR) in gastric cancer cells. It can bind to diacylglycerol (DAG) in the trans-Golgi network (TGN) and may regulate basolateral membrane protein exit from TGN. Alternative splicing results in multiple transcript variants encoding different isoforms.

Synonyms:

PKC-D2, nPKC-D2, HSPC187

Protein Families:

Druggable Genome, Protein Kinase

Product images:


Western blot analysis of PKD2 Antibody in extracts from NIH/3T3 cells treated with PMA 250ng/ml 15'.