

Product datasheet for **AP06560PU-S**

CD31 (PECAM1) Rabbit Polyclonal Antibody

Product data:

Product Type:	Primary Antibodies
Applications:	IF, IHC, WB
Recommended Dilution:	Western blot: 1/500-1/1000. Immunofluorescence: 1/50-1/200. Immunohistochemistry on Paraffin Sections: 1/50-1/200.
Reactivity:	Human, Mouse
Host:	Rabbit
Clonality:	Polyclonal
Immunogen:	Synthetic peptide, corresponding to amino acids 670-720 of Human CD31.
Specificity:	This antibody detects endogenous levels of CD31/PECAM-1 protein. (region surrounding Thr709)
Formulation:	Phosphate buffered saline (PBS), pH 7.2 State: Aff - Purified State: Liquid purified Ig fraction (> 95% pure by SDS-PAGE) Preservative: 0.02% Sodium Azide, 50% Glycerol
Concentration:	1.0 mg/ml
Purification:	Affinity Chromatography using epitope-specific immunogen
Conjugation:	Unconjugated
Storage:	Store undiluted at 2-8°C for one month or (in aliquots) at -20°C for longer. Avoid repeated freezing and thawing.
Stability:	Shelf life: one year from despatch.
Predicted Protein Size:	~130 kDa
Gene Name:	platelet and endothelial cell adhesion molecule 1
Database Link:	Entrez Gene 5175 Human P16284



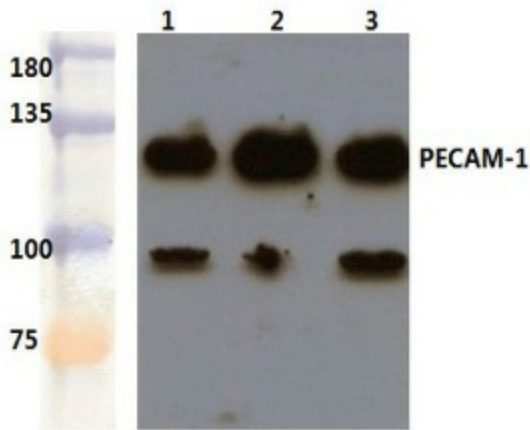
[View online »](#)

Background:

CD31 (Platelet Endothelial Cell Adhesion Molecule-1: PECAM-1), a member of the Ig superfamily of cell adhesion molecules, is expressed by circulating platelets, monocytes, neutrophils, some T cells and endothelial cells, and modulates cell adhesion, endothelial cell migration and angiogenesis. CD31 is phosphorylated on Tyr686 at the cytoplasmic carboxy-terminal tail upon various stimuli (e.g. mechanical stress or oxidative stress), presumably by Src family members. The tyrosine phosphorylation mediates associations with a number of SH2 domain containing binding partners such as PI3-kinase, SHIP, PLCy and SHP-2. Thus, CD31 serves as a scaffold for various signaling molecules.

Synonyms:

PECAM-1, EndoCAM, GPIIA'

Product images:


Western blot analysis of PECAM-1/CD31 antibody at 1/500 dilution: Lane 1: Hela whole cell lysate treated with LPS. Lane 2: PC12 whole cell lysate. Lane 3: sp2/0 whole cell lysate.



Immunohistochemistry analysis of PECAM-1/CD31 antibody in paraffin-embedded human brain tissue.