

## Product datasheet for **AP06559PU-M**

### PEA15 Rabbit Polyclonal Antibody

#### Product data:

Product Type:	Primary Antibodies
Applications:	IF, IHC, WB
Recommended Dilution:	<b>Western blot:</b> 1/500-1/1000. <b>Immunohistochemistry on paraffin sections:</b> 1/50-1/200. <b>Immunofluorescence:</b> 1/50-1/200.
Reactivity:	Human, Mouse, Rat
Host:	Rabbit
Clonality:	Polyclonal
Immunogen:	Synthetic peptide, corresponding to amino acids 78-132 of Human PEA-15.
Specificity:	This antibody detects endogenous levels of PEA-15 protein. (region surrounding Asp110)
Formulation:	Phosphate buffered saline (PBS, pH 7.2). State: Aff - Purified State: Liquid purified Ig fraction Preservative: 0.05% sodium azide
Concentration:	1.0 mg/ml
Purification:	Affinity-chromatography using epitope-specific immunogen and the purity is > 95% (by SDS-PAGE)
Conjugation:	Unconjugated
Storage:	Store undiluted at 2-8°C for one month or (in aliquots) at -20°C for longer. Avoid repeated freezing and thawing.
Stability:	Shelf life: one year from despatch.
Predicted Protein Size:	~ 36 kDa
Gene Name:	phosphoprotein enriched in astrocytes 15
Database Link:	<a href="#">Entrez Gene 8682 Human Q15121</a>



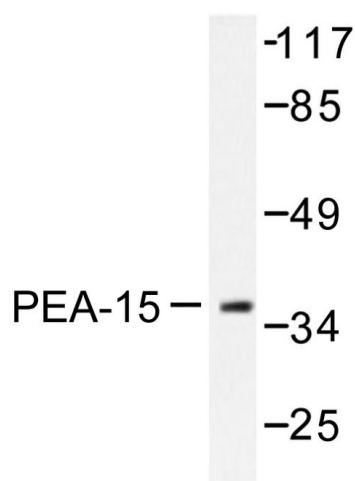
[View online »](#)

**Background:**

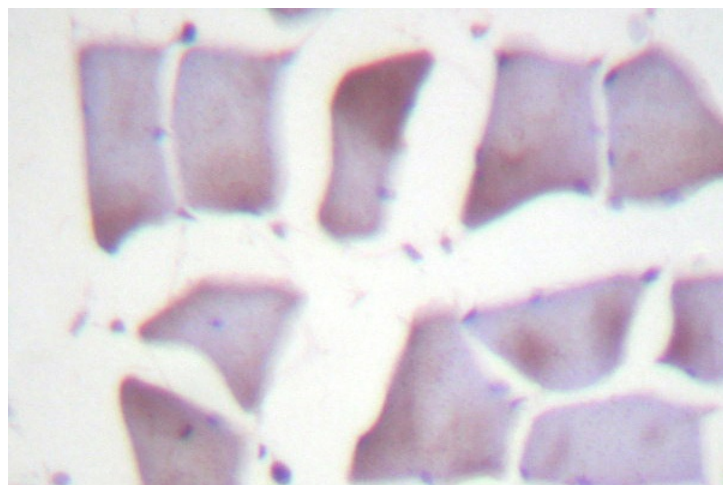
PEA-15 (phosphoprotein enriched in astrocytes) exists in a non-phosphorylated form (N), and two phosphorylated forms, Pa and Pb. PEA-15 is an endogenous substrate for PKC, which mediates the transition from Pa to Pb. The level of PEA-15 phosphorylation changes upon depolymerization or stabilization of tubulins, indicating that PEA-15 co-localizes with microtubules. The first 80 amino acids of PEA-15 correspond to the death effector domain (DED), which is a domain found in proteins that regulate apoptotic signaling pathways. The DED domain is necessary for PEA-15 to block Ras suppression. Although PEA-15 is predominantly expressed in the central nervous system, low levels of PEA-15 are expressed in liver and kidney, and higher levels in muscle. PEA-15 is also referred to as PED, phosphoprotein enriched in diabetes, for its elevated expression in type 2 diabetic patients.

**Synonyms:**

Astrocytic phosphoprotein PEA-15, PED

**Product images:**


Western blot (WB) analysis of PEA-15 antibody in extracts from Jurkat cells treated with PMA 125ng/ml 30'.



Immunohistochemistry (IHC) analysis of PEA-15 antibody in paraffin-embedded human colon carcinoma tissue.