

Product datasheet for **AP06558PU-N**

PDE4D Rabbit Polyclonal Antibody

Product data:

Product Type:	Primary Antibodies
Applications:	IHC, WB
Recommended Dilution:	Western blot: 1/500-1/1000. Immunohistochemistry on paraffin sections: 1/50-1/200.
Reactivity:	Human, Mouse, Rat
Host:	Rabbit
Clonality:	Polyclonal
Immunogen:	Synthetic peptide, corresponding to amino acids 30-70 Human PDE4D.
Specificity:	This antibody detects endogenous levels of PDE4D protein. (region surrounding His47)
Formulation:	Phosphate buffered saline (PBS), pH 7.2. State: Aff - Purified State: Liquid purified Ig fraction Preservative: 15 mM sodium azide
Concentration:	1.0 mg/ml
Purification:	Affinity-chromatography using epitope-specific immunogen and the purity is > 95% (by SDS-PAGE)
Conjugation:	Unconjugated
Storage:	Store undiluted at 2-8°C for one month or (in aliquots) at -20°C for longer. Avoid repeated freezing and thawing.
Stability:	Shelf life: one year from despatch.
Predicted Protein Size:	~ 88 kDa
Gene Name:	phosphodiesterase 4D
Database Link:	Entrez Gene 5144 Human Q08499



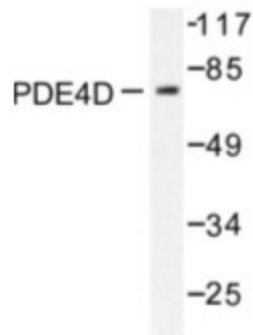
[View online »](#)

Background:

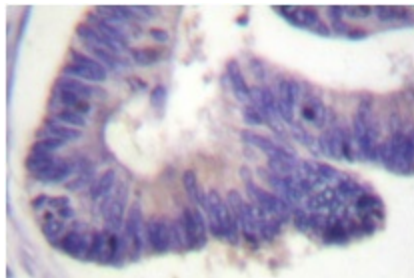
Phosphodiesterases (PDE) hydrolyze cAMP to 5'AMP and thus play a critical role in the regulation of intracellular cAMP. Division of the PDE superfamily by sequence homology and enzymatic properties yields 11 PDE families. A unique upstream conserved region (UCR) characterizes the PDE4 family. Four separate genes (A-D) encode the PDE4 enzymes, and alternative splicing generates short or long isoforms of each gene. Long PDE4 isoforms contain both UCR1 and UCR2 while short PDE4 isoforms possess only UCR2. Both UCR domains are necessary for dimerization of PDE4 isoforms. The human PDE4D gene maps to chromosome 5q12. The splice variants include isoforms PDE4D1-6.

Synonyms:

PDE4D, DPDE3, cAMP-specific 3',5'-cyclic phosphodiesterase 4D, EC=3.1.4.17, DPDE3, PDE43

Product images:

Western blot analysis of PDE4D antibody in extracts from COS7 cells treated with Nocodazole 1 ug/ml 16 h.



Immunohistochemistry analysis of PDE4D antibody in paraffin-embedded human colon carcinoma tissue.