

## Product datasheet for **AP06555PU-S**

### PAK1 Rabbit Polyclonal Antibody

#### Product data:

Product Type:	Primary Antibodies
Applications:	ELISA, IHC, WB
Recommended Dilution:	<b>Western blot:</b> 1/500-1/1000. <b>Immunohistochemistry on paraffin sections:</b> 1/50-1/200. <b>Immunofluorescence:</b> 1/50-1/200.
Reactivity:	Human, Mouse, Rat
Host:	Rabbit
Clonality:	Polyclonal
Immunogen:	Synthetic peptide, corresponding to amino acids 180-230 of Human PAK1.
Specificity:	This antibody detects endogenous levels of PAK1 protein. (region surrounding Ile206)
Formulation:	Phosphate buffered saline (PBS), pH 7.2. State: Aff - Purified State: Liquid purified Ig fraction Preservative: 0.05% sodium azide
Concentration:	1.0 mg/ml
Purification:	Affinity-chromatography using epitope-specific immunogen and the purity is > 95% (by SDS-PAGE)
Conjugation:	Unconjugated
Storage:	Store undiluted at 2-8°C for one month or (in aliquots) at -20°C for longer. Avoid repeated freezing and thawing.
Stability:	Shelf life: one year from despatch.
Predicted Protein Size:	~ 60 kDa
Gene Name:	p21 (RAC1) activated kinase 1
Database Link:	<a href="#">Entrez Gene 5058 Human Q13153</a>



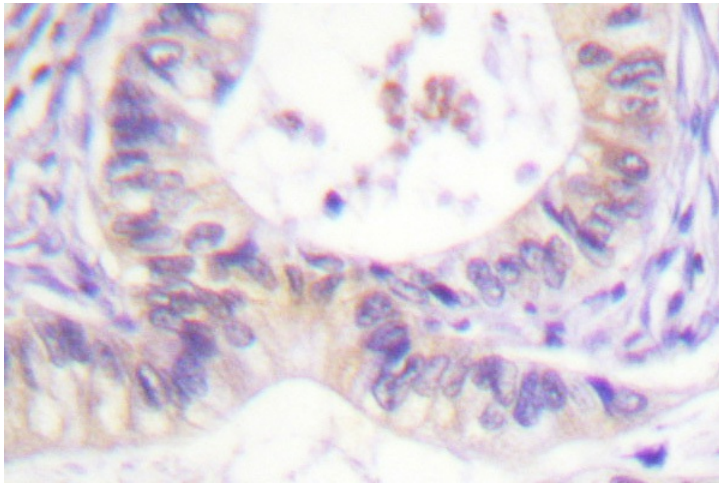
[View online »](#)

**Background:**

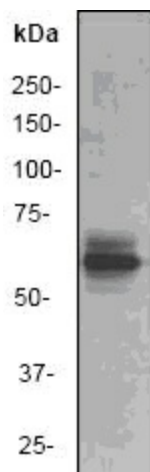
Three isoforms of serine/threonine kinases, designated  $\alpha$ PAK p68,  $\beta$ PAK p65 and  $\gamma$ PAK p62, have been shown to exhibit a high degree of sequence homology with the *S. cerevisiae* kinase Ste 20, involved in pheromone signaling. The  $\alpha$ ,  $\beta$  and  $\gamma$ PAK isoforms complex specifically with Rac1 and Cdc42 in their active GTP-bound state, inhibiting their intrinsic GTPase activity leading to their autophosphorylation. There are eight sites of autophosphorylation on  $\gamma$ PAK, including Ser 19, Ser 141 and Thr 402, and phosphorylation of Ser 141 and Thr 402 is correlated with  $\gamma$ PAK activation. Once phosphorylated and their affinity for Rac/Cdc42 reduced, the PAK isoforms disassociate from the complex to seek downstream substrates.

**Synonyms:**

PAK 1, PAK-1, Alpha-PAK, PAK alpha, p21-activated kinase 1, p65-PAK

**Product images:**

Western blot (WB) analysis of PAK1 antibody in extracts from 293 cells treated with Etoposide 25uM 60'.



Immunohistochemistry (IHC) analyzes of PAK1 antibody in paraffin-embedded human colon carcinoma tissue.