

Product datasheet for **AP06555PU-N**

PAK1 Rabbit Polyclonal Antibody

Product data:

Product Type:	Primary Antibodies
Applications:	ELISA, IHC, WB
Recommended Dilution:	Western blot: 1/500-1/1000. Immunohistochemistry on paraffin sections: 1/50-1/200. Immunofluorescence: 1/50-1/200.
Reactivity:	Human, Mouse, Rat
Host:	Rabbit
Clonality:	Polyclonal
Immunogen:	Synthetic peptide, corresponding to amino acids 180-230 of Human PAK1.
Specificity:	This antibody detects endogenous levels of PAK1 protein. (region surrounding Ile206)
Formulation:	Phosphate buffered saline (PBS), pH 7.2. State: Aff - Purified State: Liquid purified Ig fraction Preservative: 0.05% sodium azide
Concentration:	1.0 mg/ml
Purification:	Affinity-chromatography using epitope-specific immunogen and the purity is > 95% (by SDS-PAGE)
Conjugation:	Unconjugated
Storage:	Store undiluted at 2-8°C for one month or (in aliquots) at -20°C for longer. Avoid repeated freezing and thawing.
Stability:	Shelf life: one year from despatch.
Predicted Protein Size:	~ 60 kDa
Gene Name:	p21 (RAC1) activated kinase 1
Database Link:	Entrez Gene 5058 Human Q13153



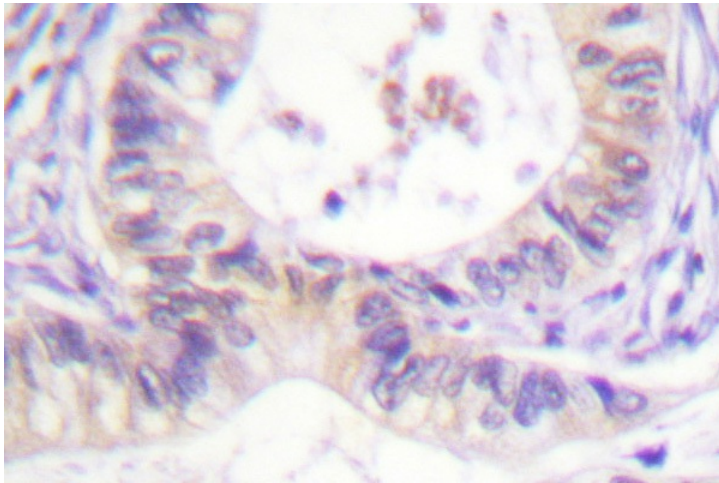
[View online »](#)

Background:

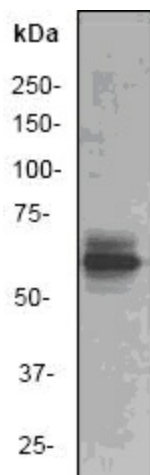
Three isoforms of serine/threonine kinases, designated α PAK p68, β PAK p65 and γ PAK p62, have been shown to exhibit a high degree of sequence homology with the *S. cerevisiae* kinase Ste 20, involved in pheromone signaling. The α , β and γ PAK isoforms complex specifically with Rac1 and Cdc42 in their active GTP-bound state, inhibiting their intrinsic GTPase activity leading to their autophosphorylation. There are eight sites of autophosphorylation on γ PAK, including Ser 19, Ser 141 and Thr 402, and phosphorylation of Ser 141 and Thr 402 is correlated with γ PAK activation. Once phosphorylated and their affinity for Rac/Cdc42 reduced, the PAK isoforms disassociate from the complex to seek downstream substrates.

Synonyms:

PAK 1, PAK-1, Alpha-PAK, PAK alpha, p21-activated kinase 1, p65-PAK

Product images:

Western blot (WB) analysis of PAK1 antibody in extracts from 293 cells treated with Etoposide 25uM 60'.



Immunohistochemistry (IHC) analyzes of PAK1 antibody in paraffin-embedded human colon carcinoma tissue.