

## Product datasheet for **AP06542PU-M**

### c-Myb (MYB) Rabbit Polyclonal Antibody

#### Product data:

Product Type:	Primary Antibodies
Applications:	ELISA, IHC, WB
Recommended Dilution:	<b>Western blot:</b> 1/500-1/1000. <b>Immunohistochemistry on paraffin sections:</b> 1/50-1/200. <b>Immunofluorescence:</b> 1/50-1/200.
Reactivity:	Human, Mouse
Host:	Rabbit
Clonality:	Polyclonal
Immunogen:	Synthetic peptide, corresponding to the N-terminus of Human c-Myb.
Specificity:	This antibody detects endogenous levels of MYB protein. (region surrounding Arg6)
Formulation:	Phosphate buffered saline (PBS), pH 7.2. State: Aff - Purified State: Liquid purified Ig fraction Preservative: 0.05% sodium azide
Concentration:	1.0 mg/ml
Purification:	Affinity-chromatography using epitope-specific immunogen and the purity is > 95% (by SDS-PAGE)
Conjugation:	Unconjugated
Storage:	Store undiluted at 2-8°C for one month or (in aliquots) at -20°C for longer. Avoid repeated freezing and thawing.
Stability:	Shelf life: one year from despatch.
Predicted Protein Size:	~ 72 kDa
Gene Name:	MYB proto-oncogene, transcription factor
Database Link:	<a href="#">Entrez Gene 4602 Human P10242</a>



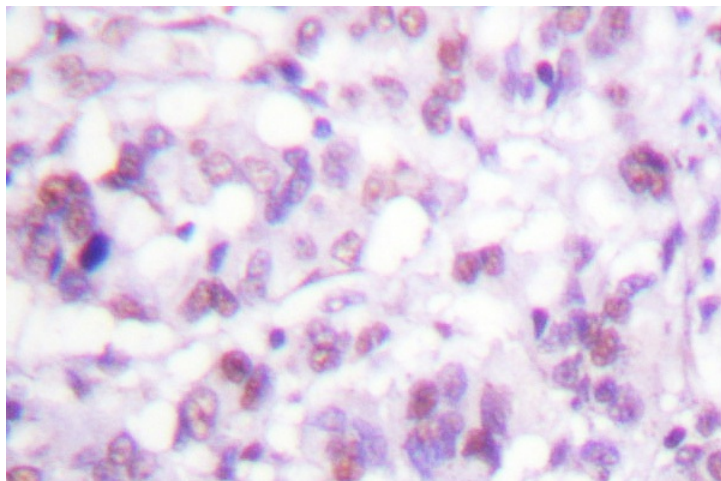
[View online »](#)

**Background:**

c-Myb is the cellular homolog of the leukemogenic avian retroviral protein v-Myc. c-Myb is expressed predominantly in immature and rapidly dividing hematopoietic cells, and cellular levels of c-Myb substantially decreases as cells reach terminal differentiation. B-Myb is expressed in a wide variety of proliferating cells, with levels accumulating during the G1 to S phase transition. A-Myb is expressed at specific times in reproductive tissues, some neural cells, and a subset of normal and neoplastic B lymphocytes.

**Synonyms:**

c-Myb

**Product images:**


Immunohistochemistry (IHC) analysis of MYB antibody in paraffin-embedded human breast carcinoma tissue.