

## Product datasheet for **AP06539PU-N**

### **MSK1 (RPS6KA5) Rabbit Polyclonal Antibody**

#### **Product data:**

|                         |                                                                                                                                                                   |
|-------------------------|-------------------------------------------------------------------------------------------------------------------------------------------------------------------|
| Product Type:           | Primary Antibodies                                                                                                                                                |
| Applications:           | IHC, WB                                                                                                                                                           |
| Recommended Dilution:   | <b>Western blot:</b> 1/500-1/1000.<br><b>Immunohistochemistry on paraffin sections</b> 1/50-1/200.                                                                |
| Reactivity:             | Human, Mouse                                                                                                                                                      |
| Host:                   | Rabbit                                                                                                                                                            |
| Clonality:              | Polyclonal                                                                                                                                                        |
| Immunogen:              | Synthetic peptide, corresponding to amino acids 331-380 of Human MSK1.                                                                                            |
| Specificity:            | This antibody detects endogenous levels of MSK1 protein.<br>(region surrounding Met355)                                                                           |
| Formulation:            | Phosphate buffered saline (PBS), pH 7.2.<br>State: Aff - Purified<br>State: Liquid purified Ig fraction (> 95% (by SDS-PAGE).<br>Preservative: 15 mM Sodium Azide |
| Concentration:          | 1.0 mg/ml                                                                                                                                                         |
| Purification:           | Affinity Chromatography using epitope-specific immunogen.                                                                                                         |
| Conjugation:            | Unconjugated                                                                                                                                                      |
| Storage:                | Store undiluted at 2-8°C for one month or (in aliquots) at -20°C for longer.<br>Avoid repeated freezing and thawing.                                              |
| Stability:              | Shelf life: one year from despatch.                                                                                                                               |
| Predicted Protein Size: | ~ 90 kDa                                                                                                                                                          |
| Gene Name:              | ribosomal protein S6 kinase A5                                                                                                                                    |
| Database Link:          | <a href="#">Entrez Gene 9252 Human</a><br><a href="#">O75582</a>                                                                                                  |



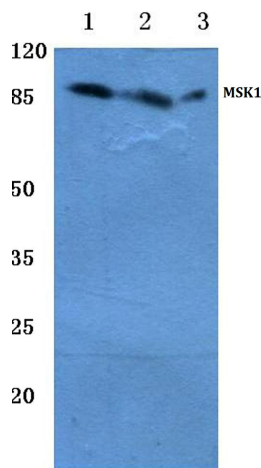
[View online »](#)

**Background:**

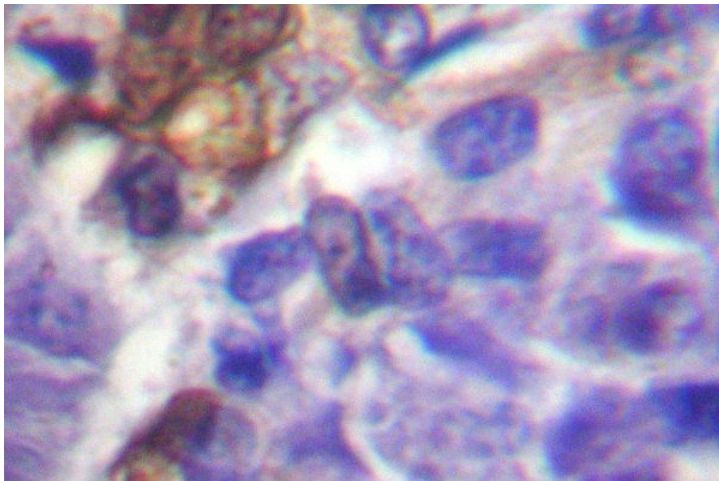
MSK-1 is a mitogen and stress activated protein kinase-1 which belongs to the AGC family of kinases and is related in structure to the ribosomal p70 S6 kinase subfamily. MSK-1 can be activated by ERK1/2 and SAPK2 /p38 MAP kinase. It is also known to be required for the phosphorylation of CREB, ATF1 H3 and HMG-14 in response to mitogen and stress. Similar to RSK, MSK-1 contains two kinase domains (N-term and a C-term). Once phosphorylated on Thr581 and Ser360 by ERK1/2 and SAPK2/p38, MSK-1 autophosphorylate on at least 5 sites. Of these autophosphorylation sites Ser212 and Ser376 get phosphorylated by the C-terminal kinase domain of MSK-1 which is essential for the catalytic activity of the N-terminal kinase domain.

**Synonyms:**

Ribosomal protein S6 kinase alpha-5, RSKL

**Product images:**

Western blot (WB) analysis of MSK1 antibody at 1/500 dilution Lane 1: Jurkat whole cell lysate  
Lane 2: Mouse liver tissue lysate Lane 3: Rat liver tissue lysate



Immunohistochemistry (IHC) analysis of MSK1 antibody in paraffin-embedded human breast carcinoma tissue.