

## Product datasheet for **AP06538PU-M**

### MYL12B Rabbit Polyclonal Antibody

#### Product data:

Product Type:	Primary Antibodies
Applications:	IF, IHC, WB
Recommended Dilution:	<b>Western blot:</b> 1/500-1/1000. <b>Immunohistochemistry on paraffin sections:</b> 1/50-1/200. <b>Immunofluorescence:</b> 1/50-1/200.
Reactivity:	Human, Mouse, Rat
Host:	Rabbit
Clonality:	Polyclonal
Immunogen:	Synthetic peptide, corresponding to the 10-40 of Human MYL9.
Specificity:	This antibody detects endogenous levels of MRLC2 protein. (region surrounding Pro13)
Formulation:	Phosphate buffered saline (PBS), pH 7.2. State: Aff - Purified State: Liquid purified Ig fraction Preservative: 0.05% sodium azide
Concentration:	1.0 mg/ml
Purification:	Affinity-chromatography using epitope-specific immunogen and the purity is > 95% (by SDS-PAGE)
Conjugation:	Unconjugated
Storage:	Store undiluted at 2-8°C for one month or (in aliquots) at -20°C for longer. Avoid repeated freezing and thawing.
Stability:	Shelf life: one year from despatch.
Predicted Protein Size:	~ 18 kDa
Gene Name:	myosin light chain 12B
Database Link:	<a href="#">Entrez Gene 103910 Human O14950</a>



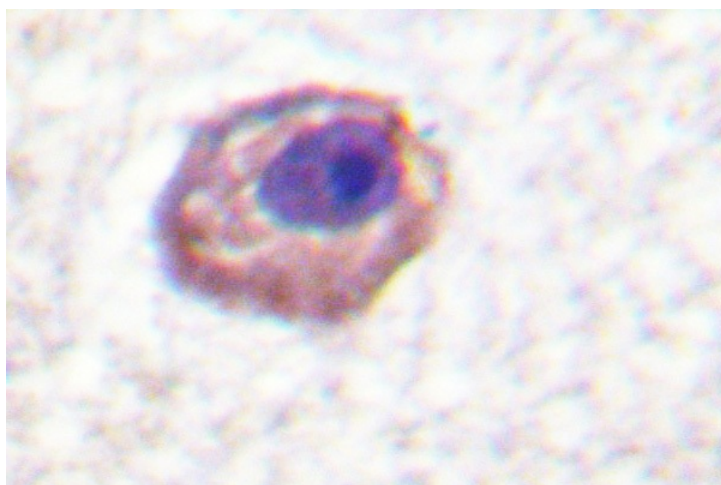
[View online »](#)

**Background:**

Myosin is a 480 kD protein that interacts with actin in muscle and non muscle cells (8). Conventional myosin contains two identical heavy chains (MHC-200kD each) and four light chains (MLC-15-26 kD). Conventional myosin molecules consist of two major regions: tail (rod) and globular heads; they aggregate into filaments through the tail region and interact with actin and with adenosine triphosphate (ATP) through the head region. Multiple forms of myosin heavy chains exist in skeletal, smooth and cardiac muscle and in non-muscle tissues. A spectrum of skeletal muscle fiber types is found in adult skeletal muscles. The two major skeletal muscle fiber types are type I (slow-twitch) and type II (fast-twitch). Skeletal muscle type II fibers can be further subdivided into types IIa (fast red) and IIb (fast white).

**Synonyms:**

Myosin regulatory light chain MRLC2, MLC-2A, SHUJUN-1, MYLC2B, MRLC2, MLC20, MLC-2

**Product images:**

Immunohistochemistry (IHC) analysis of MRLC2 antibody in paraffin-embedded human lung carcinoma tissue.