

## Product datasheet for **AP06537PU-N**

### **MMP10 (351-400) Rabbit Polyclonal Antibody**

#### **Product data:**

Product Type:	Primary Antibodies
Applications:	IF, IHC, WB
Recommended Dilution:	<b>Immunofluorescence:</b> 1/50-1/200. <b>Immunohistochemistry on Paraffin Sections:</b> 1/50-1/200. <b>Western blotting:</b> 1/500-1/1,000.
Reactivity:	Human, Mouse, Rat
Host:	Rabbit
Clonality:	Polyclonal
Immunogen:	Synthetic peptide, corresponding to amino acids 351-400 of Human MMP-10.
Specificity:	This antibody detects endogenous levels of MMP-10 protein. (region surrounding Ile387)
Formulation:	Phosphate buffered saline (PBS), pH~7.2 State: Aff - Purified State: Liquid purified Ig fraction (> 95% pure by SDS-PAGE) Preservative: 0.05% Sodium Azide
Concentration:	1.0 mg/ml
Purification:	Affinity Chromatography using epitope-specific immunogen
Conjugation:	Unconjugated
Storage:	Store undiluted at 2-8°C for one month or (in aliquots) at -20°C for longer. Avoid repeated freezing and thawing.
Stability:	Shelf life: One year from despatch.
Predicted Protein Size:	~54 kDa
Gene Name:	matrix metalloproteinase 10
Database Link:	<a href="#">Entrez Gene 4319 Human</a> <a href="#">P09238</a>



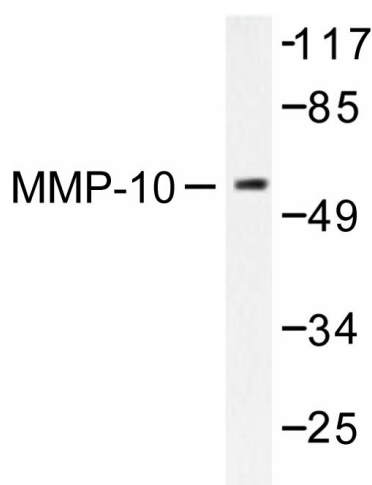
[View online »](#)

**Background:**

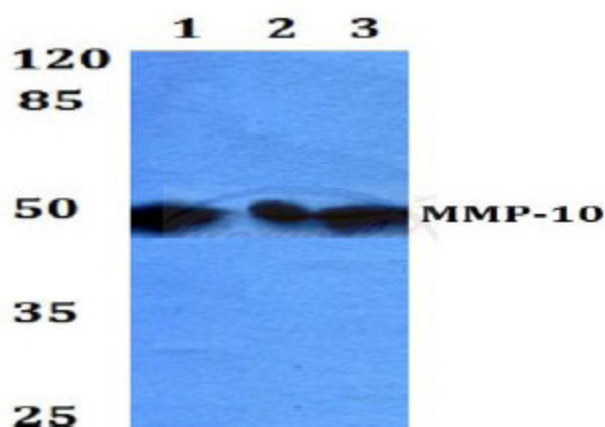
Proteins of the matrix metalloproteinase (MMP) family are zinc containing proteolytic enzymes involved in the breakdown of the extracellular matrix in normal physiological processes, such as embryonic development, reproduction, and tissue remodeling. They also play an important role in apoptosis, tumor cell growth, invasion, metastasis, as well as in angiogenesis and wound healing. Most MMP's are secreted as inactive proproteins which are activated when cleaved by extracellular proteinases. Most of the MMP's contain a common domain structure, which include a signal sequence, a propeptide, a catalytic domain and a hemopexin-like (Hpx) domain. MMP10 degrades proteoglycans, gelatins of type I, III, IV, and V; weakly collagens III, IV, and V. and fibronectin. It activates procollagenase. The gene is part of a cluster of MMP genes which localize to chromosome 11q22.3.

**Synonyms:**

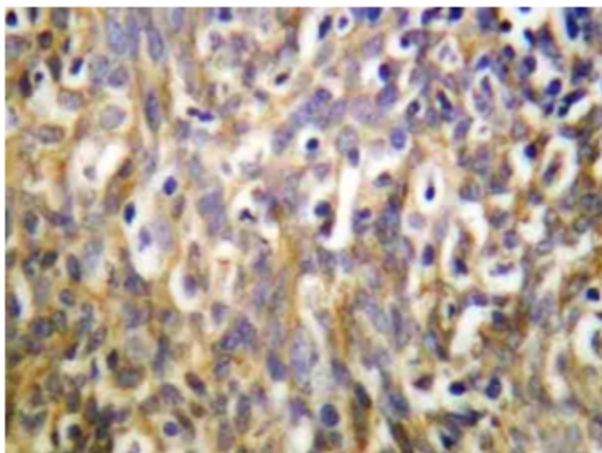
Stromelysin-2, SL-2, Matrix metalloproteinase-10, Transin-2, STMY2, MMP10

**Product images:**


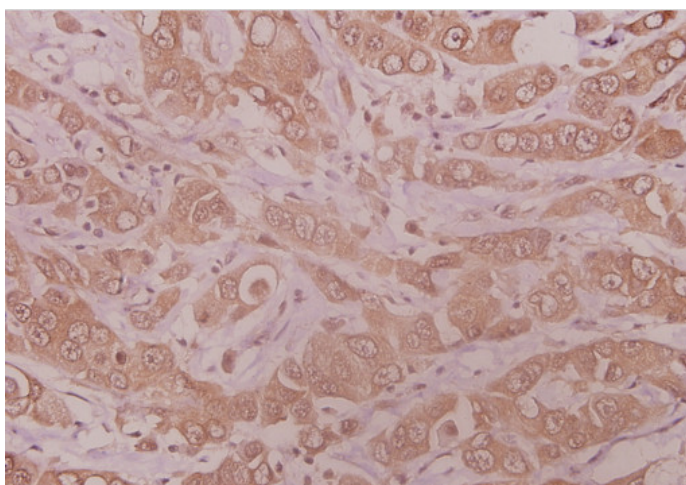
Western blot (WB) analysis of MMP-10 antibody



Western blot (WB) analysis of MMP-10 antibody at 1/500 dilution: Lane 1: HEK293T whole cell lysate. Lane 2: Raw264.7 whole cell lysate. Lane 3: H9C2 whole cell lysate.



Immunohistochemistry analysis of MMP-10 Antibody in paraffin-embedded human brain tissue.



Immunohistochemistry analysis of MMP-10 Antibody in paraffin-embedded human colorectal carcinoma tissue at 1/50.