

Product datasheet for **AP06522PU-M**

BMX Rabbit Polyclonal Antibody

Product data:

Product Type:	Primary Antibodies
Applications:	IF, IHC, WB
Recommended Dilution:	Western blot: 1/500-1/1000. Immunohistochemistry on paraffin sections 1/50-1/200. Immunofluorescence: 1/50-1/200.
Reactivity:	Human, Mouse
Host:	Rabbit
Clonality:	Polyclonal
Immunogen:	Synthetic peptide, corresponding to amino acids N-terminus of Human ETK.
Specificity:	This antibody detects endogenous levels of ETK protein. (region surrounding Lys35)
Formulation:	Phosphate buffered saline (PBS), pH 7.2. State: Aff - Purified State: Liquid purified Ig fraction Preservative: 15 mM sodium azide
Concentration:	1.0 mg/ml
Purification:	Affinity-chromatography using epitope-specific immunogen and the purity is > 95% (by SDS-PAGE)
Conjugation:	Unconjugated
Storage:	Store undiluted at 2-8°C for one month or (in aliquots) at -20°C for longer. Avoid repeated freezing and thawing.
Stability:	Shelf life: one year from despatch.
Predicted Protein Size:	~ 78 kDa
Gene Name:	BMX non-receptor tyrosine kinase
Database Link:	Entrez Gene 12169 Mouse Entrez Gene 660 Human P51813



[View online »](#)

Background:

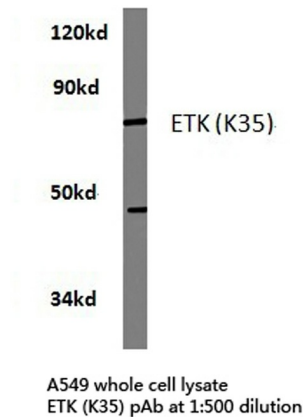
Etk, also known as BMX, is a member of the Bruton's tyrosine kinase (Btk) family (1). It is expressed in a variety of hematopoietic, epithelial and endothelial cells. Etk, like other Btk family members, contains a pleckstrin homology (PH) domain and Src homology SH3 and SH2 domains. It participates in multiple signal transduction pathways (2). Phosphorylation of Tyr566 by Src kinase is required for activation of Etk in vivo (3). In endothelial and epithelial cells, Etk is regulated by FAK through phosphorylation at Tyr40 (4).

Synonyms:

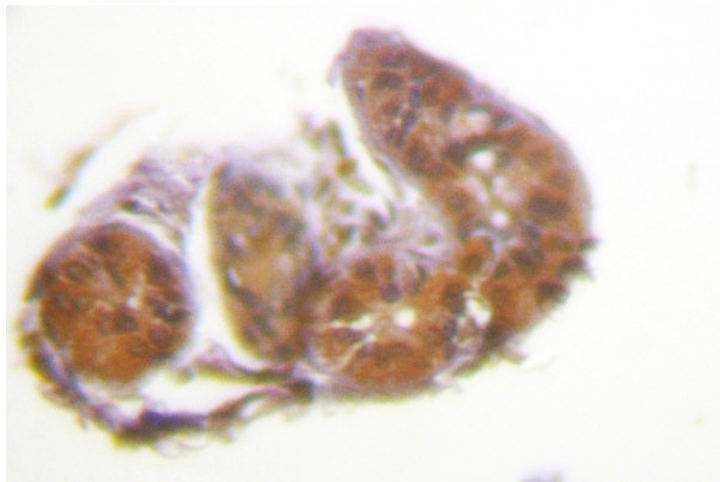
NTK38, ETK

Protein Families:

Druggable Genome, Protein Kinase

Product images:


Western blot (WB) analysis of ETK antibody in extracts from A549 cells.



Immunohistochemistry (IHC) analysis of ETK antibody in paraffin-embedded human skin tissue.