

Product datasheet for **AP06521PU-M**

Estrogen Receptor 1 (ESR1) Rabbit Polyclonal Antibody

Product data:

Product Type:	Primary Antibodies
Applications:	IF, IHC, WB
Recommended Dilution:	Western blot: 1/500-1/1000. Immunohistochemistry on paraffin sections: 1/50-1/200. Immunofluorescence: 1/50-1/200.
Reactivity:	Human, Mouse, Rat
Host:	Rabbit
Clonality:	Polyclonal
Immunogen:	Synthetic peptide, corresponding to amino acids 501-550 of Human ERα.
Specificity:	This antibody detects endogenous levels of ER-alpha protein. (region surrounding Lys531)
Formulation:	Phosphate buffered saline (PBS), pH 7.2. State: Aff - Purified State: Liquid purified Ig fraction Preservative: 0.05% sodium azide
Concentration:	1.0 mg/ml
Purification:	Affinity-chromatography using epitope-specific immunogen and the purity is > 95% (by SDS-PAGE)
Conjugation:	Unconjugated
Storage:	Store undiluted at 2-8°C for one month or (in aliquots) at -20°C for longer. Avoid repeated freezing and thawing.
Stability:	Shelf life: one year from despatch.
Predicted Protein Size:	~ 66 kDa
Gene Name:	estrogen receptor 1
Database Link:	Entrez Gene 2099 Human P03372



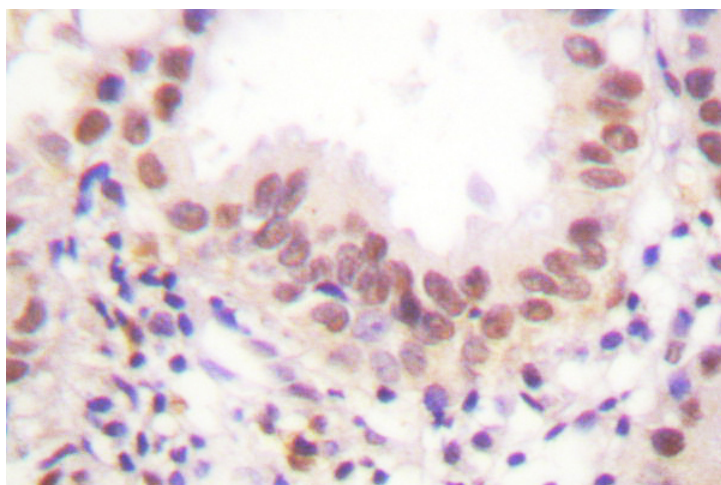
[View online »](#)

Background:

Estrogen receptors (ER) are members of the steroid/thyroid hormone receptor superfamily of ligand-activated transcription factors. Estrogen receptors, including ERalpha and ERbeta, contain DNA binding and ligand binding domains and are critically involved in regulating the normal function of reproductive tissues. ERalpha and ERbeta have been shown to be differentially activated by various ligands. Receptor-ligand interactions trigger a cascade of events, including dissociation from heat shock proteins, receptor dimerization, phosphorylation and the association of the hormone activated receptor with specific regulatory elements in target genes. Evidence suggests that ERalpha and ERbeta may be regulated by distinct mechanisms even though they share many functional characteristics.

Synonyms:

ER alpha, Estradiol receptor, ESR1, ESR, NR3A1

Product images:


Immunohistochemistry (IHC) analysis of ER-alpha antibody in paraffin-embedded human lung carcinoma tissue.