

Product datasheet for **AP06520PU-M**

EIF4G1 Rabbit Polyclonal Antibody

Product data:

Product Type:	Primary Antibodies
Applications:	IF, IHC
Recommended Dilution:	Immunofluorescence: 1/50-1/200. Immunohistochemistry on paraffin sections: 1/50-1/200.
Reactivity:	Human, Mouse, Rat
Host:	Rabbit
Clonality:	Polyclonal
Immunogen:	Synthetic peptide, corresponding to amino acids 1080-1130 of Human eIF4G.
Specificity:	This antibody detects endogenous levels of eIF4G protein. (region surrounding Gln1103)
Formulation:	Phosphate buffered saline (PBS), pH 7.2. State: Aff - Purified State: Liquid purified Ig fraction Preservative: 0.05% sodium azide
Concentration:	1.0 mg/ml
Purification:	Affinity-chromatography using epitope-specific immunogen and the purity is > 95% (by SDS-PAGE)
Conjugation:	Unconjugated
Storage:	Store undiluted at 2-8°C for one month or (in aliquots) at -20°C for longer. Avoid repeated freezing and thawing.
Stability:	Shelf life: one year from despatch.
Gene Name:	eukaryotic translation initiation factor 4 gamma 1
Database Link:	Entrez Gene 1981 Human Q04637



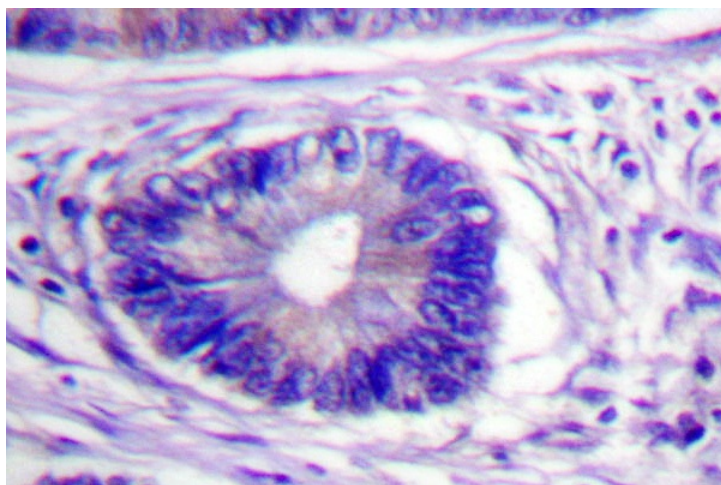
[View online »](#)

Background:

The initiation of protein synthesis in eukaryotic cells is regulated by interactions between protein initiation factors and RNA molecules. The eukaryotic initiation complex eIF4F exists in vitro as a trimeric complex of eIF4G, eIF4E, and eIF4A. Together, the complex allows ribosome binding to mRNA by inducing the unwinding of mRNA secondary structures. eIF4E is a 25 kDa protein that binds to the mRNA “cap” during an early step in the initiation of protein synthesis. eIF4A acts as an ATP-dependent RNA helicase. eIF4G acts as a bridge between eIF4E, eIF4A, and the eIF3 complex.

Synonyms:

EIF4G, EIF4GI, eIF-4-gamma 1, eIF-4G 1, eIF-4G1, Eukaryotic translation initiation factor 4 gamma 1, p220

Product images:


Immunohistochemistry (IHC) analysis of eIF4G antibody in paraffin-embedded human colon carcinoma tissue.