

## Product datasheet for **AP06517PU-N**

### Collagen III (COL3A1) Rabbit Polyclonal Antibody

#### Product data:

Product Type:	Primary Antibodies
Applications:	ELISA, IF, IHC, WB
Recommended Dilution:	<b>Western blot:</b> 1/500-1/1000. <b>Immunofluorescence:</b> 1/50-1/200. <b>Immunohistochemistry on Paraffin Sections:</b> 1/50-1/200.
Reactivity:	Human, Mouse, Rat
Host:	Rabbit
Clonality:	Polyclonal
Immunogen:	Synthetic peptide, corresponding to amino acids 71-120 of Human COL3A1.
Specificity:	This antibody detects endogenous levels of Collagen III protein (COL3A1).
Formulation:	PBS, pH~7.2 State: Aff - Purified State: Liquid purified Ig fraction (> 95% pure by SDS-PAGE) Preservative: 0.05% Sodium Azide
Concentration:	1.0 mg/ml
Purification:	Affinity Chromatography using epitope-specific immunogen
Conjugation:	Unconjugated
Storage:	Store undiluted at 2-8°C for one month or (in aliquots) at -20°C for longer. Avoid repeated freezing and thawing.
Stability:	Shelf life: One year from despatch.
Predicted Protein Size:	~138 kDa
Gene Name:	collagen type III alpha 1 chain
Database Link:	<a href="#">Entrez Gene 1281 Human P02461</a>



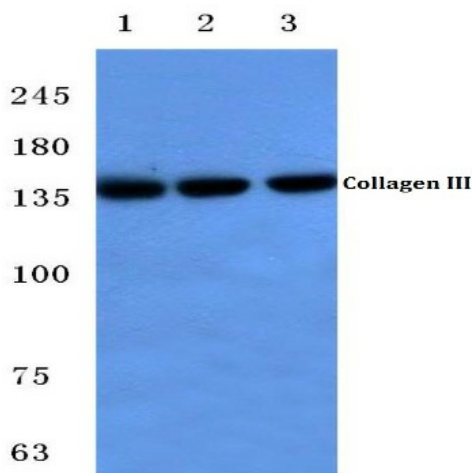
[View online »](#)

**Background:**

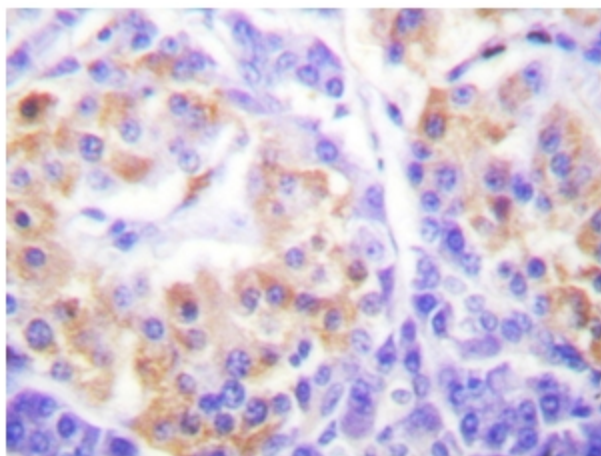
Collagen III is a fibrillar collagen that is found in extensible connective tissues such as skin, lung, and the vascular system, frequently in association with type I Collagen. Mutations in the gene are associated with Ehlers Danlos syndrome type IV, and with aortic and arterial aneurysms. Although alternate transcripts have been detected for this gene, they are the result of mutations; these mutations alter splicing, often leading to the exclusion of multiple exons.

**Synonyms:**

COL3A1

**Product images:**

Western Blot analysis of Collagen III antibody at 1/500 dilution. Lane 1: Mouse lung tissue lysate. Lane 2: Mouse liver tissue lysate. Lane 3: Rat lung tissue lysate.



Immunohistochemistry analysis of Collagen III antibody in paraffin-embedded human pancreas tissue.