

Product datasheet for **AP06516PU-S**

Collagen I (COL1A2) Rabbit Polyclonal Antibody

Product data:

Product Type:	Primary Antibodies
Applications:	ELISA, IF, IHC, WB
Recommended Dilution:	Western blot: 1/500-1/1000. Immunofluorescence: 1/50-1/200. Immunohistochemistry on Paraffin Sections: 1/50-1/200.
Reactivity:	Human, Mouse, Rat
Host:	Rabbit
Clonality:	Polyclonal
Immunogen:	Synthetic peptide, corresponding to the N-terminus of Human COL1A2.
Specificity:	This antibody detects endogenous levels of Collagen I protein. (region surrounding Ser3)
Formulation:	Phosphate buffered saline (PBS), pH~7.2 State: Aff - Purified State: Liquid purified Ig fraction (> 95% by SDS-PAGE) Preservative: 0.05% sodium azide
Concentration:	1.0 mg/ml
Purification:	Affinity Chromatography using epitope-specific immunogen
Conjugation:	Unconjugated
Storage:	Store undiluted at 2-8°C for one month or (in aliquots) at -20°C for longer. Avoid repeated freezing and thawing.
Stability:	Shelf life: one year from despatch.
Predicted Protein Size:	~ 125 kDa
Gene Name:	collagen type I alpha 2 chain
Database Link:	Entrez Gene 12843 Mouse Entrez Gene 84352 Rat Entrez Gene 1278 Human P08123



[View online »](#)

Background:

The extensive family of COL gene products (collagens) is composed of several chain types, including fibril-forming interstitial collagens (types I, II, III and V) and basement membrane collagens (type IV), each type containing multiple isoforms. Collagens are fibrous, extracellular matrix proteins with high tensile strength and are the major components of connective tissue, such as tendons and cartilage. All collagens contain a triple helix domain and frequently show lateral self-association in order to form complex connective tissues. Several collagens also play a role in cell adhesion, important for maintaining normal tissue architecture and function.

Synonyms:

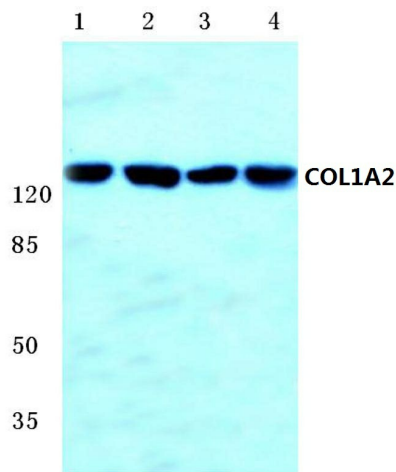
COL1A2, Alpha-2 type I collagen

Protein Families:

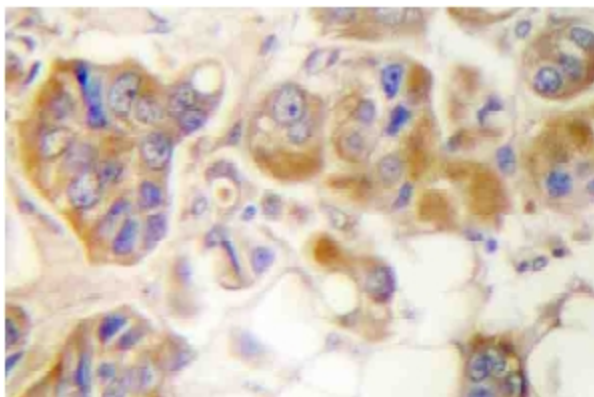
Druggable Genome

Protein Pathways:

ECM-receptor interaction, Focal adhesion

Product images:


Western blot (WB) analysis of COL1A2 antibody at 1/500 dilution Lane 1:Hela cell lysate Lane 2:Mouse liver tissue lysate Lane 3:Mouse lung tissue lysate Lane 4:Rat liver tissue lysate



Immunohistochemistry analysis of Collagen I Antibody in paraffin-embedded human breast carcinoma tissue.