

## Product datasheet for **AP06515PU-M**

### Casein Kinase 2 beta (CSNK2B) Rabbit Polyclonal Antibody

#### Product data:

Product Type:	Primary Antibodies
Applications:	ELISA, IHC, WB
Recommended Dilution:	<b>Western blot:</b> 1/500-1/1000. <b>Immunohistochemistry on paraffin sections</b> 1/50-1/200.
Reactivity:	Human, Mouse, Rat
Host:	Rabbit
Clonality:	Polyclonal
Immunogen:	Synthetic peptide, corresponding to amino acids 175-220 of Human Casein Kinase II $\beta$ .
Specificity:	This antibody detects endogenous levels of CK2-beta protein. (region surrounding Ser205)
Formulation:	Phosphate buffered saline (PBS), pH 7.2. State: Aff - Purified State: Liquid purified Ig fraction (> 95% pure by SDS-PAGE). Preservative: 0.05% sodium azide
Concentration:	1.0 mg/ml
Purification:	Affinity Chromatography using epitope-specific immunogen.
Conjugation:	Unconjugated
Storage:	Store undiluted at 2-8°C for one month or (in aliquots) at -20°C for longer. Avoid repeated freezing and thawing.
Stability:	Shelf life: one year from despatch.
Predicted Protein Size:	~ 25 kDa
Gene Name:	casein kinase 2 beta
Database Link:	<a href="#">Entrez Gene 1460 Human P67870</a>



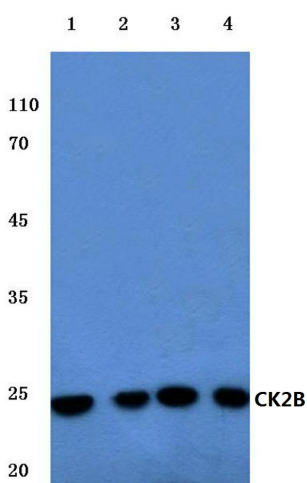
[View online »](#)

**Background:**

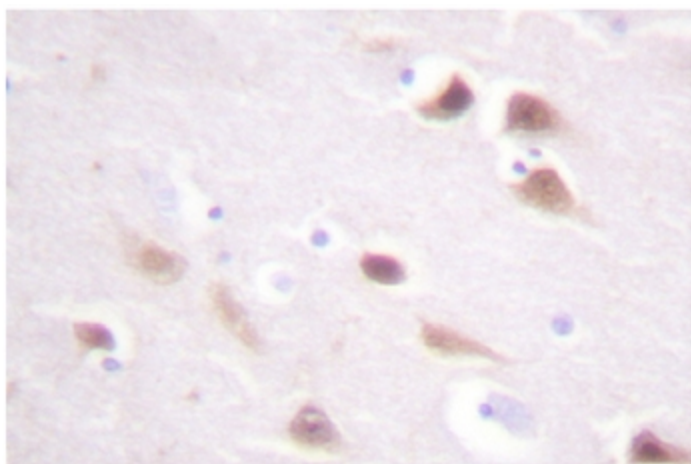
Casein kinase I (also designated CKI) and casein kinase II (also designated CKII) compose a family of serine/threonine protein kinases which are present in all eukaryotes examined to date. CKI family members, which include CKI $\alpha$ ,  $\gamma$ ,  $\epsilon$  and  $\delta$ , have been implicated in the control of cytoplasmic and nuclear processes, including DNA replication and repair. CKII is usually expressed as a tetrameric complex consisting of either an  $\alpha_2\beta_2$  or an  $\alpha\alpha'\beta_2$  structure. The  $\alpha$  catalytic subunit is stimulated by the  $\beta$  regulatory subunit, which undergoes autophosphorylation. CKII activity is high in the cytosol and nucleus of proliferating and differentiating cells. CKII is known to phosphorylate more than 100 different substrates including nuclear oncoproteins, transcription factors and enzymes involved in DNA metabolism.

**Synonyms:**

CK II beta, Phosvitin, G5a, CSNK2B, CK2N

**Product images:**


Western blot (WB) analysis of Casein Kinase II $\beta$  antibody at 1/500 dilution Lane 1:Jukat whole cell lysate Lane 2:Hela whole cell lysate Lane 3:Mouse brain tissue lysate Lane 4:Rat brain tissue lysate



Immunohistochemistry (IHC) analyzes of CK2- $\beta$  antibody in paraffin-embedded human breast tissue