

Product datasheet for **AP06508PU-M**

C5R1 (C5AR1) Rabbit Polyclonal Antibody

Product data:

Product Type:	Primary Antibodies
Applications:	IF, IHC, WB
Recommended Dilution:	Western blot: 1/500-1/1000. Immunofluorescence: 1/50-1/200. Immunohistochemistry on Paraffin Sections: 1/50-1/200.
Reactivity:	Human, Mouse, Rat
Host:	Rabbit
Clonality:	Polyclonal
Immunogen:	Synthetic peptide, corresponding to amino acids 300-350 of Human C5aR.
Specificity:	This antibody detects endogenous levels of CD88/C5aR protein. (region surrounding Ser334)
Formulation:	Phosphate buffered saline (PBS), pH~7.2 with 0.02% Sodium Azide and 50% Glycerol. State: Aff - Purified State: Liquid purified Ig fraction (>95% pure by SDS-PAGE)
Concentration:	1.0 mg/ml
Purification:	Affinity-Chromatography using epitope-specific immunogen
Conjugation:	Unconjugated
Storage:	Store undiluted at 2-8°C for one month or (in aliquots) at -20°C for longer. Avoid repeated freezing and thawing.
Stability:	Shelf life: one year from despatch.
Predicted Protein Size:	~ 45 kDa
Gene Name:	complement component 5a receptor 1
Database Link:	Entrez Gene 728 Human P21730



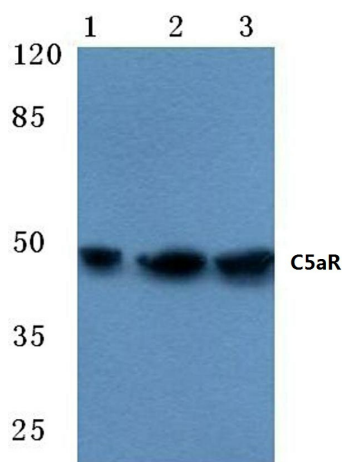
[View online »](#)

Background:

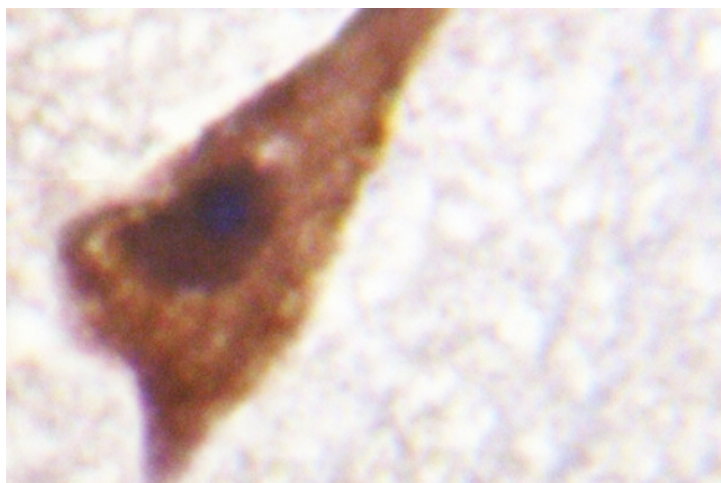
The human anaphylatoxin C5a is a 74 residue glycopeptide which is generated by proteolytic cleavage of the complement factor C5 in the course of complement activation. A variety of biological effects evoked by C5a can be demonstrated, rendering this molecule an important mediator of inflammation, with granulocytes and macrophages as the main target cells. All cellular responses to C5a are specifically mediated by interactions with the membrane bound C5a receptor, a seven transmembrane GTP binding coupled receptor that belongs to the rhodopsin supergene family. C5a receptor 1 expression has been reported in myeloid blood cells, brain, liver, lung, spleen, heart, kidney, and intestinal tract. ESTs have been isolated from B cell/lung/testis, nerve, and placenta libraries.

Synonyms:

C5a-R, C5aR, C5AR1, Complement Component 5a Receptor 1

Product images:


Western blot (WB) analysis of C5aR antibody at 1/500 dilution Lane 1: HEK293T cell lysate treated with PMA Lane 2: sp2/0 cell lysate treated with PMA Lane 3: PC12 cell lysate treated with PMA



Immunohistochemistry (IHC) analysis of CD88/C5aR antibody in paraffin-embedded human breast tissue.