

Product datasheet for **AP06506PU-N**

CD130 (IL6ST) Rabbit Polyclonal Antibody

Product data:

Product Type:	Primary Antibodies
Applications:	IF, IHC, WB
Recommended Dilution:	Western blot: 1/500-1/1000. Immunofluorescence: 1/50-1/200. Immunohistochemistry on Paraffin Sections: 1/50-1/200.
Reactivity:	Human, Mouse, Porcine
Host:	Rabbit
Clonality:	Polyclonal
Immunogen:	Synthetic peptide, corresponding to amino acids 750-800 of Human gp130.
Specificity:	This antibody detects endogenous levels of CD130/gp130 protein. (region surrounding Ser778)
Formulation:	Phosphate buffered saline (PBS), pH~7.2 State: Aff - Purified State: Liquid purified Ig fraction (> 95% pure by SDS-PAGE). Preservative: 0.05% Sodium Azide
Concentration:	1.0 mg/ml
Purification:	Affinity Chromatography using epitope-specific immunogen.
Conjugation:	Unconjugated
Storage:	Store undiluted at 2-8°C for one month or (in aliquots) at -20°C for longer. Avoid repeated freezing and thawing.
Stability:	Shelf life: one year from despatch.
Predicted Protein Size:	~160 kDa
Gene Name:	interleukin 6 signal transducer
Database Link:	Entrez Gene 3572 Human P40189



[View online »](#)

Background:

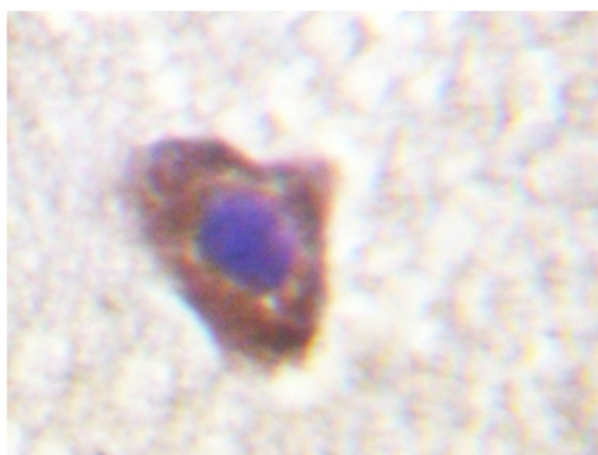
IL-6 activates intracellular signaling through binding a receptor consisting of an 80 kDa ligand-binding protein (IL-6R) and a second protein of 130 kDa. IL-6 first binds to IL-6R which subsequently associates with a gp130 dimer. The active signaling complex consists of at minimum IL-6, IL-6R and a dimer of two gp130 proteins that are linked by a disulfide bond. A soluble form of IL-6R is generated by proteolytic cleavage of the membrane-bound precursor and can function as an agonistic molecule that can actively participate in cell-to-cell signaling. The second subunit of the IL-6 complex, gp130, also functions as a component of several additional receptor complexes including leukemia inhibitory factor (LIF), oncostatin M (OSM), ciliary neurotrophic factor (CNTF) and IL-11. LIF binds to the LIF receptor with low affinity and to a complex of the LIF receptor and gp130 with high affinity, while OSM appears to bind to gp130 with low affinity and to a complex of gp130 and the LIF receptor with high affinity.

Synonyms:

Interleukin-6 receptor subunit beta, IL-6R-beta, IL6 receptor beta

Product images:

Western blot analysis of gp130 antibody in extracts from Jurkat cells.



Immunohistochemistry (IHC) analyzes of gp130 antibody in paraffin-embedded human breast tissue.