

## Product datasheet for **AP06505PU-N**

### CBL Rabbit Polyclonal Antibody

#### Product data:

Product Type:	Primary Antibodies
Applications:	IF, IHC, WB
Recommended Dilution:	<b>Western blot:</b> 1/500-1/1000. <b>Immunofluorescence:</b> 1/50-1/200. <b>Immunohistochemistry on paraffin sections:</b> 1/50-1/200.
Reactivity:	Human, Mouse, Rat
Host:	Rabbit
Clonality:	Polyclonal
Immunogen:	Synthetic peptide, corresponding to amino acids 665-710 of Human Cbl.
Specificity:	This antibody detects endogenous levels of CBL protein. (region surrounding Gly694)
Formulation:	Phosphate buffered saline (PBS), pH 7.2. State: Aff - Purified State: Liquid purified Ig fraction Preservative: 0.05% sodium azide
Concentration:	1.0 mg/ml
Purification:	Affinity-chromatography using epitope-specific immunogen and the purity is > 95% (by SDS-PAGE)
Conjugation:	Unconjugated
Storage:	Store undiluted at 2-8°C for one month or (in aliquots) at -20°C for longer. Avoid repeated freezing and thawing.
Stability:	Shelf life: one year from despatch.
Predicted Protein Size:	~ 100, 120 kDa
Gene Name:	Cbl proto-oncogene
Database Link:	<a href="#">Entrez Gene 867 Human P22681</a>



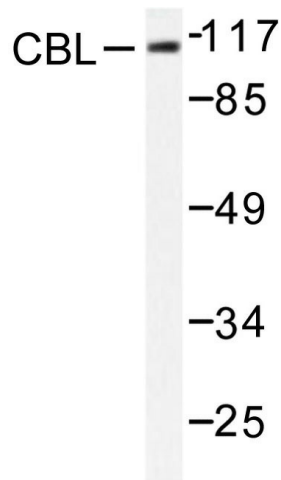
[View online »](#)

**Background:**

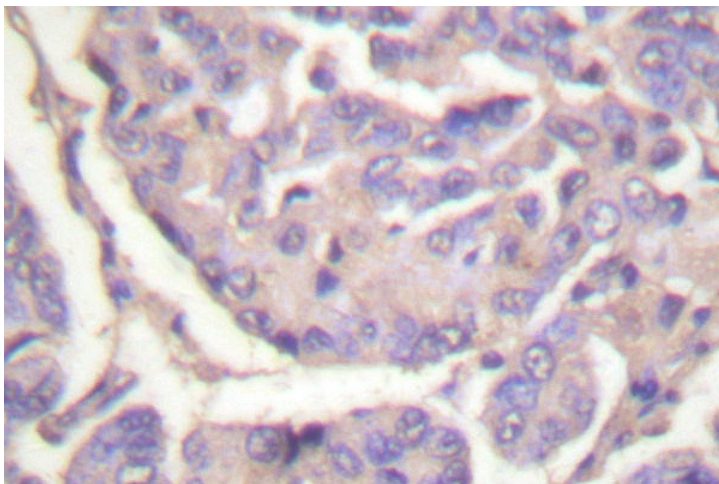
Cbl (also designated the c-Cbl proto-oncogene, E3 ubiquitin-protein ligase CBL, Casitas B-lineage lymphoma proto-oncogene and RING finger protein 55) has been identified as the cellular homolog of the v-Cbl oncogene isolated from an NFS/N mouse that developed a pre-B cell lymphoma following infection with the replication-competent Cas Br-M murine leukemic virus. c-Cbl is expressed at relatively high levels in a wide range of hematopoietic tumor cell lines as well as in normal tissues such as thymus and testis. The c-Cbl gene product has been identified as a cytoplasmic protein with apparent DNA binding and dimerization domains characteristic of transcription factors. A single c-Cbl locus termed CBL2 has been mapped to human chromosome 11q23. This region of chromosome 11 is involved in translocations and deletions in a broad range of leukemias; c-Cbl has been found to be translocated from chromosome 11 in leukemias with either t(4;11) or t(11;14) abnormalities.

**Synonyms:**

RING finger protein 55, CBL2, c-CBL

**Product images:**

Western blot (WB) analysis of CBL antibody in extracts from 293 cells.



Immunohistochemistry (IHC) analyzes of CBL antibody in paraffin-embedded human breast carcinoma tissue.