

Product datasheet for **AP06502PU-N**

CEBPE Rabbit Polyclonal Antibody

Product data:

Product Type:	Primary Antibodies
Applications:	IF, IHC, WB
Recommended Dilution:	Western blot: 1/500-1/1000. Immunohistochemistry on paraffin sections: 1/50-1/200. Immunofluorescence: 1/50-1/200.
Reactivity:	Human
Host:	Rabbit
Clonality:	Polyclonal
Immunogen:	Synthetic peptide, corresponding to amino acids 38-92 of Human C/EBP-ε.
Specificity:	This antibody detects endogenous levels of C/EBP-ε protein. (region surrounding Lys70)
Formulation:	Phosphate buffered saline (PBS), pH 7.2. State: Aff - Purified State: Liquid purified Ig fraction Preservative: 0.05% sodium azide
Concentration:	1.0 mg/ml
Purification:	Affinity-chromatography using epitope-specific immunogen and the purity is > 95% (by SDS-PAGE)
Conjugation:	Unconjugated
Storage:	Store undiluted at 2-8°C for one month or (in aliquots) at -20°C for longer. Avoid repeated freezing and thawing.
Stability:	Shelf life: one year from despatch.
Predicted Protein Size:	~ 30 kDa
Gene Name:	CCAAT/enhancer binding protein epsilon
Database Link:	Entrez Gene 1053 Human Q15744



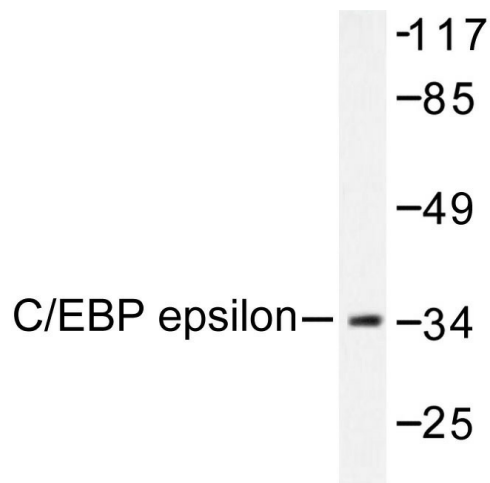
[View online »](#)

Background:

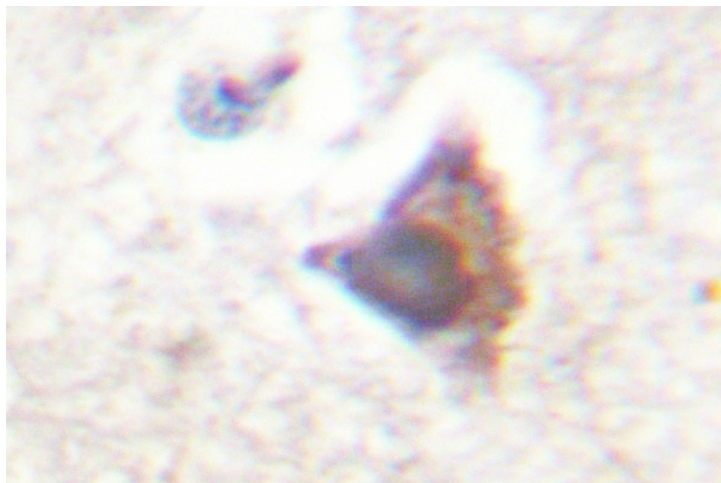
EBP1 (ErbB-3-binding protein 1), also known as PA2G4 (proliferation-associated 2G4), p38-2G4 or HG4-1, is a member of the peptidase M24C family and functions as an RNA-binding protein involved in cellular proliferation and differentiation processes. It is expressed in a variety of cell lines, including a wide range of tumor cell lines, and localizes to the cytoplasm. Upon treatment with Neuregulin-1 (heregulin), EBP1 translocates to the nucleus. EBP1 is a component of pre-ribosomal ribonucleoprotein complexes, participating in ribosome assembly and regulating the later steps of rRNA processing. In addition, EBP1 interacts with ErbB-3 and may function as a modulator of the ErbB-3-mediated signal transduction pathway by regulating the effects of Neuregulin-1. EBP1 also associates with histone deacetylases (HDACs), functioning as a transcriptional corepressor of cell cycle regulatory genes.

Synonyms:

C/EBP epsilon

Product images:


Western blot (WB) analysis of C/EBP- ϵ antibody in extracts from HuvEc cell treated with Insulin 0.01U/ml 15'.



Immunohistochemistry (IHC) analysis of C/EBP- ϵ antibody in paraffin-embedded human breast carcinoma tissue.