

## Product datasheet for **AP06498PU-M**

### **Bcl-2-like 1 (Bcl-xL) Rabbit Polyclonal Antibody**

#### **Product data:**

|                         |   |
|-------------------------|---|
| Product Type:           | Primary Antibodies  |
| Applications:           | IF, IHC, WB   |
| Recommended Dilution:   | <b>Western blot:</b> 1/500-1/1000.<br><b>Immunofluorescence:</b> 1/50-1/200.<br><b>Immunohistochemistry on paraffin sections:</b> 1/50-1/200. |
| Reactivity:             | Human, Mouse, Rat   |
| Host:                   | Rabbit  |
| Clonality:              | Polyclonal  |
| Immunogen:              | Synthetic peptide, corresponding to the N-terminus of Human Bcl-X.  |
| Specificity:            | This antibody detects endogenous levels of BCL-XL protein.<br>(region surrounding Ser43)  |
| Formulation:            | Phosphate buffered saline (PBS), pH 7.2.<br>State: Aff - Purified<br>State: Liquid purified Ig fraction<br>Preservative: 0.05% sodium azide   |
| Concentration:          | 1.0 mg/ml   |
| Purification:           | Affinity-chromatography using epitope-specific immunogen and the purity is > 95% (by SDS-PAGE)  |
| Conjugation:            | Unconjugated  |
| Storage:                | Store undiluted at 2-8°C for one month or (in aliquots) at -20°C for longer.<br>Avoid repeated freezing and thawing.                          |
| Stability:              | Shelf life: one year from despatch.   |
| Predicted Protein Size: | ~ 26 kDa  |
| Gene Name:              | BCL2 like 1   |
| Database Link:          | <a href="#">Entrez Gene 598 Human Q07817</a>  |



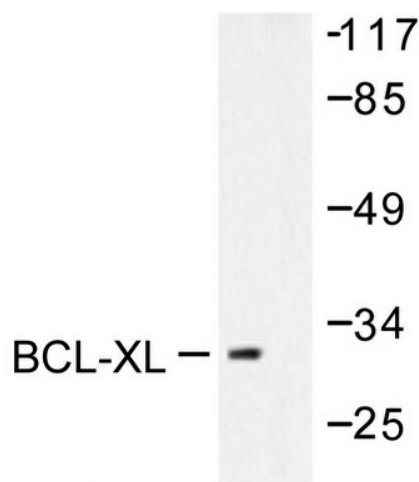
[View online »](#)

**Background:**

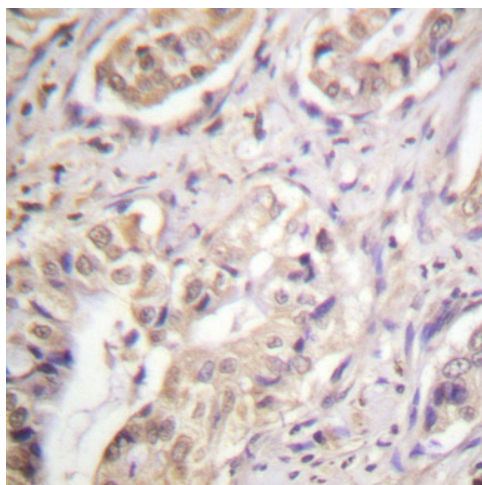
The protein encoded by this gene belongs to the Bcl2 protein family. Bcl2 family members form hetero or homodimers and act as anti or pro apoptotic regulators that are involved in a wide variety of cellular activities. The proteins encoded by this gene are located at the outer mitochondrial membrane, and have been shown to regulate outer mitochondrial membrane channel (VDAC) opening. VDAC regulates mitochondrial membrane potential, and thus controls the production of reactive oxygen species and release of cytochrome C by mitochondria, both of which are the potent inducers of cell apoptosis. Two alternatively spliced transcript variants, which encode distinct isoforms, have been reported. The longer isoform acts as an apoptotic inhibitor and the shorter form acts as an apoptotic activator.

**Synonyms:**

Bcl2-L-1, BCL2L1, BCL2L, BCLX, Bcl-x, bcl-xL, bcl-xS, Bcl-2-like protein 1

**Product images:**


Western blot (WB) analysis of BCL-XL antibody (Cat.-No.: [AP06498PU-N]) in extracts from 293 cells treated with UV.



Immunohistochemistry (IHC) analysis of BCL-XL antibody (Cat.-No.: [AP06498PU-N]) in paraffin-embedded human breast tissue.