

Product datasheet for **AP06497PU-S**

BCL2 Rabbit Polyclonal Antibody

Product data:

| | |
|-------------------------|----------------------------------------------------------------------------------------------------------------------------------------------------------------------|
| Product Type: | Primary Antibodies |
| Applications: | IF, IHC, WB |
| Recommended Dilution: | Western blot: 1/500-1/1000. Immunohistochemistry on Paraffin Sections: 1/50-1/200. Immunofluorescence: 1/50-1/200. |
| Reactivity: | Human, Mouse, Rat |
| Host: | Rabbit |
| Clonality: | Polyclonal |
| Immunogen: | Synthetic peptide, corresponding to amino acids 31-80 of Human Bcl-2. |
| Specificity: | This antibody detects endogenous levels of BCL-2 protein. (region surrounding Pro65) |
| Formulation: | Phosphate buffered saline (PBS), pH 7.2. State: Aff - Purified State: Liquid purified Ig fraction (> 95% pure by SDS-PAGE) Preservative: 15 mM Sodium Azide |
| Concentration: | 1.0 mg/ml |
| Purification: | Affinity Chromatography using epitope-specific immunogen |
| Conjugation: | Unconjugated |
| Storage: | Store undiluted at 2-8°C for one month or (in aliquots) at -20°C for longer. Avoid repeated freezing and thawing. |
| Stability: | Shelf life: one year from despatch. |
| Predicted Protein Size: | ~ 26 kDa |
| Gene Name: | B-cell CLL/lymphoma 2 |
| Database Link: | Entrez Gene 596 Human P10415 |



[View online »](#)

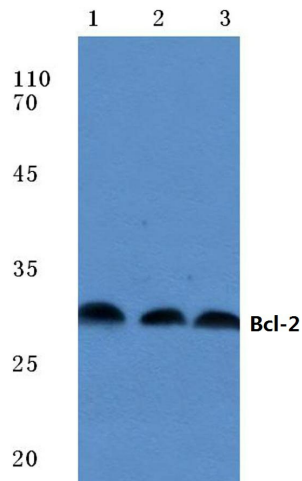
Background:

Bcl-2 is one among many key regulators of apoptosis which are essential for proper development, tissue homeostasis and protection against foreign pathogens. Human Bcl-2 is a 26 kDa, membrane-associated, anti-apoptotic oncoprotein that can promote cell survival through protein-protein interactions with other Bcl-2 related family members, such as the death suppressors Bcl-xL, Mcl-1, Bcl-w and A1, or the death agonists Bax, Bak, Bik, Bad and BID. The anti-apoptotic function of Bcl-2 can also be regulated through proteolytic processing and phosphorylation. Bcl-2 may promote cell survival by interfering with the activation of the cytochrome c/Apaf-1 pathway through stabilization of the mitochondrial membrane.

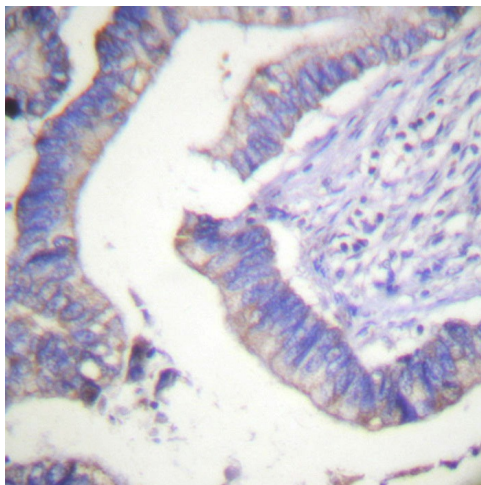
Synonyms:

BCL2, Bcl-2 alpha

Product images:



Western blot (WB) analysis of Bcl-2 antibody at 1/500 dilution Lane 1: MCF-7 whole cell lysate treated with PMA Lane 2: Mouse brain tissue lysate Lane 3: Rat kidney tissue lysate



Immunohistochemistry (IHC) analyzes of BCL-2 antibody in paraffin-embedded human colon carcinoma tissue.