

Product datasheet for **AP06496PU-N**

beta Arrestin 1 (ARRB1) Rabbit Polyclonal Antibody

Product data:

Product Type:	Primary Antibodies
Applications:	IF, IHC, WB
Recommended Dilution:	Western blot: 1/500-1/1000. Immunohistochemistry on paraffin sections: 1/50-1/200. Immunofluorescence: 1/50-1/200.
Reactivity:	Human
Host:	Rabbit
Clonality:	Polyclonal
Immunogen:	Synthetic peptide, corresponding to amino acids 390-440 of Human Arrestin- β -1.
Specificity:	This antibody detects endogenous levels of Arrestin 1 protein. (region surrounding Glu406)
Formulation:	Phosphate buffered saline (PBS), pH 7.2. State: Aff - Purified State: Liquid purified Ig fraction Preservative: 0.05% sodium azide
Concentration:	1.0 mg/ml
Purification:	Affinity-chromatography using epitope-specific immunogen and the purity is > 95% (by SDS-PAGE)
Conjugation:	Unconjugated
Storage:	Store undiluted at 2-8°C for one month or (in aliquots) at -20°C for longer. Avoid repeated freezing and thawing.
Stability:	Shelf life: one year from despatch.
Predicted Protein Size:	~ 50 kDa
Gene Name:	arrestin beta 1
Database Link:	Entrez Gene 408 Human P49407



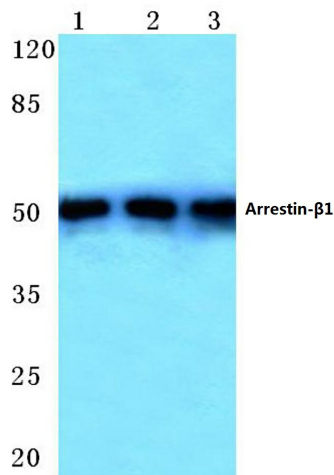
[View online »](#)

Background:

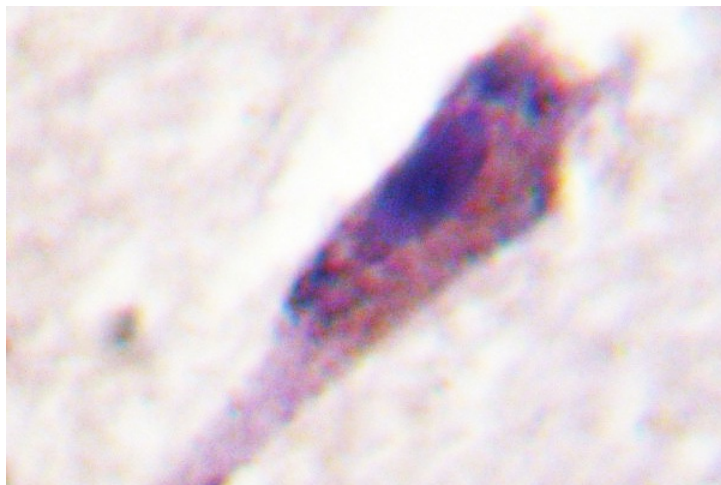
Beta Arrestin 1 is a member of a family of proteins that are widely expressed but especially abundant in the central nervous system. Serving as an adaptor or scaffold molecule, beta Arrestin 1 is essential for mitogenic signaling. Beta Arrestin 1 has important roles in the cytoplasm and at the plasma membrane in the desensitization and internalization of G protein coupled receptors (GPCRs) and is increasingly appreciated to play an important role in the endocytosis and signaling of GPCRs. Beta Arrestin 1 in the cytosol is phosphorylated by ERK1 and 2 on serine 412 in a negative feedback mechanism and binds to the phosphorylated receptors at the plasma membrane.

Synonyms:

ARR1, Beta-arrestin-1

Product images:


Western blot (WB) analysis of Arrestin- β -1 antibody at 1/500 dilution Lane 1: HeLa whole cell lysate Lane 2: Mouse brain tissue lysate Lane 3: Rat brain tissue lysate



Immunohistochemistry (IHC) analyzes of Arrestin 1 antibody in paraffin-embedded human brain tissue.