

## Product datasheet for **AP06496PU-M**

### beta Arrestin 1 (ARRB1) Rabbit Polyclonal Antibody

#### Product data:

|                         |                                                                                                                                               |
|-------------------------|-----------------------------------------------------------------------------------------------------------------------------------------------|
| Product Type:           | Primary Antibodies                                                                                                                            |
| Applications:           | IF, IHC, WB                                                                                                                                   |
| Recommended Dilution:   | <b>Western blot:</b> 1/500-1/1000.<br><b>Immunohistochemistry on paraffin sections:</b> 1/50-1/200.<br><b>Immunofluorescence:</b> 1/50-1/200. |
| Reactivity:             | Human                                                                                                                                         |
| Host:                   | Rabbit                                                                                                                                        |
| Clonality:              | Polyclonal                                                                                                                                    |
| Immunogen:              | Synthetic peptide, corresponding to amino acids 390-440 of Human Arrestin- $\beta$ -1.                                                        |
| Specificity:            | This antibody detects endogenous levels of Arrestin 1 protein.<br>(region surrounding Glu406)                                                 |
| Formulation:            | Phosphate buffered saline (PBS), pH 7.2.<br>State: Aff - Purified<br>State: Liquid purified Ig fraction<br>Preservative: 0.05% sodium azide   |
| Concentration:          | 1.0 mg/ml                                                                                                                                     |
| Purification:           | Affinity-chromatography using epitope-specific immunogen and the purity is > 95% (by SDS-PAGE)                                                |
| Conjugation:            | Unconjugated                                                                                                                                  |
| Storage:                | Store undiluted at 2-8°C for one month or (in aliquots) at -20°C for longer.<br>Avoid repeated freezing and thawing.                          |
| Stability:              | Shelf life: one year from despatch.                                                                                                           |
| Predicted Protein Size: | ~ 50 kDa                                                                                                                                      |
| Gene Name:              | arrestin beta 1                                                                                                                               |
| Database Link:          | <a href="#">Entrez Gene 408 Human P49407</a>                                                                                                  |



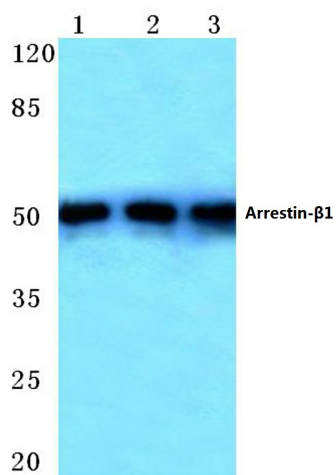
[View online »](#)

**Background:**

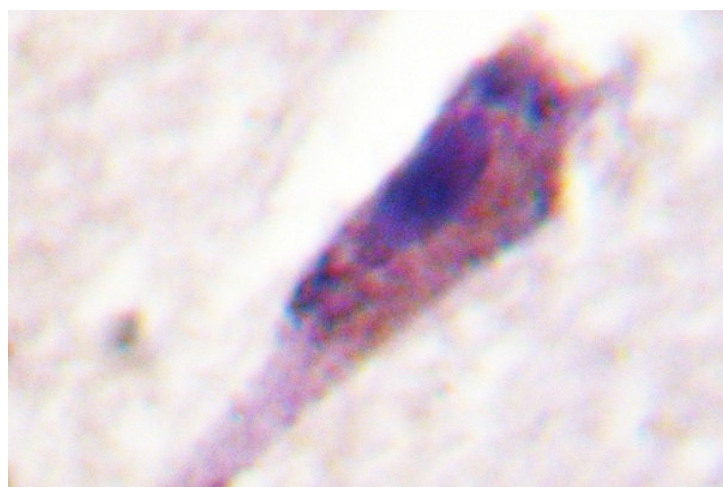
Beta Arrestin 1 is a member of a family of proteins that are widely expressed but especially abundant in the central nervous system. Serving as an adaptor or scaffold molecule, beta Arrestin 1 is essential for mitogenic signaling. Beta Arrestin 1 has important roles in the cytoplasm and at the plasma membrane in the desensitization and internalization of G protein coupled receptors (GPCRs) and is increasingly appreciated to play an important role in the endocytosis and signaling of GPCRs. Beta Arrestin 1 in the cytosol is phosphorylated by ERK1 and 2 on serine 412 in a negative feedback mechanism and binds to the phosphorylated receptors at the plasma membrane.

**Synonyms:**

ARR1, Beta-arrestin-1

**Product images:**


Western blot (WB) analysis of Arrestin- $\beta$ -1 antibody at 1/500 dilution Lane 1: HeLa whole cell lysate Lane 2: Mouse brain tissue lysate Lane 3: Rat brain tissue lysate



Immunohistochemistry (IHC) analyzes of Arrestin 1 antibody in paraffin-embedded human brain tissue.