

Product datasheet for **AP06491PU-N**

PRAS40 (AKT1S1) Rabbit Polyclonal Antibody

Product data:

Product Type:	Primary Antibodies
Applications:	IHC, WB
Recommended Dilution:	Western blot: 1/500-1/1000. Immunohistochemistry on paraffin sections: 1/50-1/200.
Reactivity:	Human, Mouse, Rat
Host:	Rabbit
Clonality:	Polyclonal
Immunogen:	Synthetic peptide, corresponding to amino acids 210-260 of Human PRAS40.
Specificity:	This antibody detects endogenous levels of Akt1 S1 protein. (region surrounding Pro240)
Formulation:	Phosphate buffered saline (PBS), pH 7.2. State: Aff - Purified State: Liquid purified Ig fraction Preservative: 0.05% sodium azide
Concentration:	1.0 mg/ml
Purification:	Affinity-chromatography using epitope-specific immunogen and the purity is > 95% (by SDS-PAGE)
Conjugation:	Unconjugated
Storage:	Store undiluted at 2-8°C for one month or (in aliquots) at -20°C for longer. Avoid repeated freezing and thawing.
Stability:	Shelf life: one year from despatch.
Predicted Protein Size:	~ 40 kDa
Gene Name:	AKT1 substrate 1
Database Link:	Entrez Gene 84335 Human Q96B36



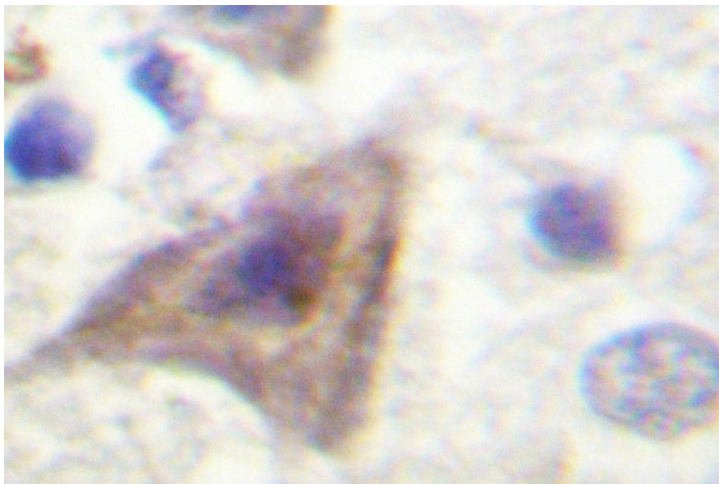
[View online »](#)

Background:

Akt, also known as protein kinase B, is one of the major downstream targets of the phosphatidylinositol 3-kinase pathway. This protein kinase has been implicated in insulin signaling, stimulation of cellular growth, inhibition of apoptosis and transformation of cells. The proline-rich Akt substrate PRAS40, also designated AKT1S1, becomes phosphorylated by activated Akt on Ser or Thr residues in the motif RXRXX(S/T). Phosphorylated PRAS40 subsequently binds 14-3-3 in a sequence-specific manner, thereby inducing such changes as alteration of protein subcellular localization and regulation of intrinsic enzymatic activity. Studies also suggest that PRAS40 phosphorylation and its interaction with pAkt and 14-3-3 may play an important role in neuroprotection mediated by NGF in apoptotic neuronal cell death after cerebral ischemia. PRAS40 maps to human chromosome 19q13.33.

Synonyms:

Lobe; MGC2865; OTTHUMP00000196759; OTTHUMP00000196760; PRAS40

Product images:

Immunohistochemistry (IHC) analyzes of Akt1 S1 antibody in paraffin-embedded human breast tissue.