

Product datasheet for **AP06485PU-M**

Ku70 (XRCC6) Rabbit Polyclonal Antibody

Product data:

Product Type:	Primary Antibodies
Applications:	IHC, WB
Recommended Dilution:	Western blot: 1/500-1/1000. Immunohistochemistry on Paraffin Sections: 1/50-1/200.
Reactivity:	Human, Mouse
Host:	Rabbit
Clonality:	Polyclonal
Immunogen:	Synthetic peptide, corresponding to amino acids 560-600 of Human Ku-70.
Specificity:	This antibody detects endogenous levels of XRCC6 protein. (region surrounding Arg586)
Formulation:	PBS, pH 7.2 State: Aff - Purified State: Liquid purified Ig fraction (> 95% by SDS-PAGE) Preservative: 15 mM Sodium Azide
Concentration:	1.0 mg/ml
Purification:	Affinity Chromatography using epitope-specific immunogen
Conjugation:	Unconjugated
Storage:	Store undiluted at 2-8°C for one month or (in aliquots) at -20°C for longer. Avoid repeated freezing and thawing.
Stability:	Shelf life: one year from despatch.
Predicted Protein Size:	~ 70 kDa
Gene Name:	X-ray repair complementing defective repair in Chinese hamster cells 6
Database Link:	<u>Entrez Gene 2547 Human P12956</u>



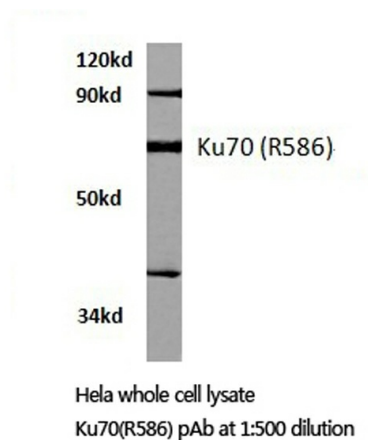
[View online »](#)

Background:

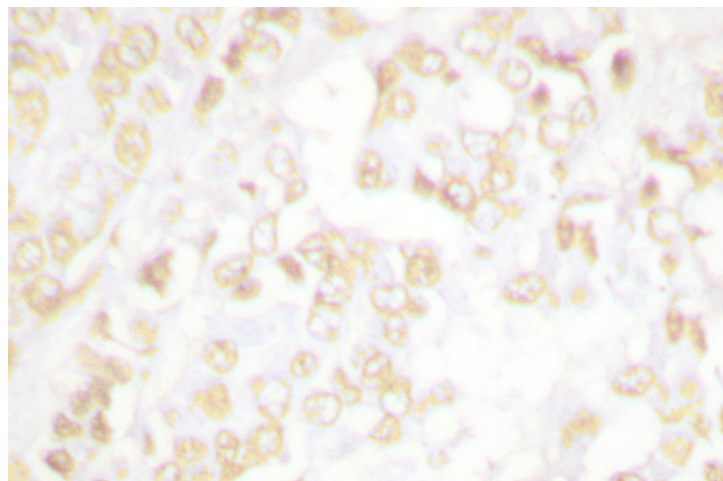
The Ku protein is localized in the nucleus and is composed of subunits referred to as Ku-70 (or p70) and Ku-86 (or p86), which is also known by the synonym Ku-80 (or p80). Ku was first described as an autoantigen to which antibodies were produced in a patient with scleroderma-polymyositis overlap syndrome, and was later found in the sera of patients with other rheumatic diseases. Both subunits of the Ku protein have been cloned, and a number of functions have been proposed for Ku, including cell signaling, DNA replication and transcriptional activation.

Synonyms:

G22P1, TLAA, CTCBF, CTC75

Product images:


Western blot (WB) analysis of XRCC6 antibody in extracts from hela cells.



Immunohistochemistry (IHC) analyzes of XRCC6 antibody in paraffin-embedded human breast carcinoma tissue.