

Product datasheet for **AP06484PU-M**

Ku80 (XRCC5) Rabbit Polyclonal Antibody

Product data:

Product Type:	Primary Antibodies
Applications:	IHC, WB
Recommended Dilution:	Western blot: 1/500-1/1000. Immunohistochemistry on paraffin sections 1/50-1/200.
Reactivity:	Human, Mouse
Host:	Rabbit
Clonality:	Polyclonal
Immunogen:	Synthetic peptide, corresponding to amino acids 700-730 of Human XRCC5.
Specificity:	This antibody detects endogenous levels of XRCC5 protein. (region surrounding Ala717)
Formulation:	Phosphate buffered saline (PBS), pH 7.2. State: Aff - Purified State: Liquid purified Ig fraction Preservative: 0.05% sodium azide
Concentration:	1.0 mg/ml
Purification:	Affinity-chromatography using epitope-specific immunogen and the purity is > 95% (by SDS-PAGE)
Conjugation:	Unconjugated
Storage:	Store undiluted at 2-8°C for one month or (in aliquots) at -20°C for longer. Avoid repeated freezing and thawing.
Stability:	Shelf life: one year from despatch.
Predicted Protein Size:	~ 70, 82 kDa
Gene Name:	X-ray repair complementing defective repair in Chinese hamster cells 5
Database Link:	Entrez Gene 7520 Human P13010



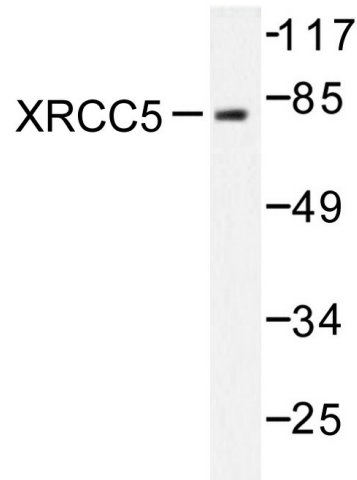
[View online »](#)

Background:

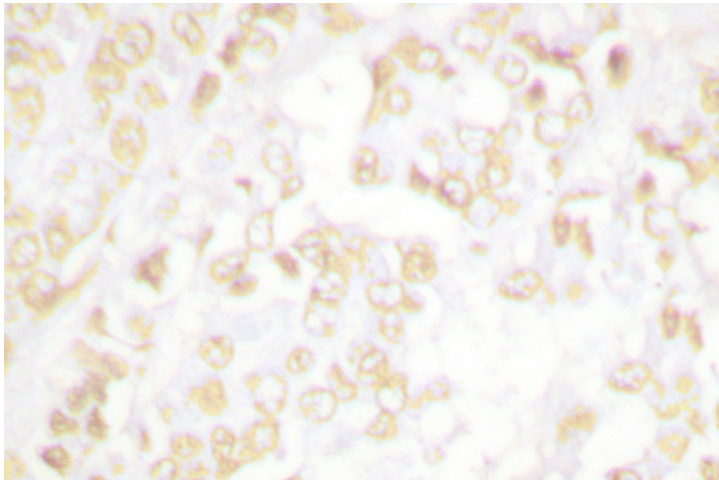
The Ku protein is localized in the nucleus and is composed of subunits referred to as Ku-70 (or p70) and Ku-86 (or p86), which is also known by the synonym Ku-80 (or p80). Ku was first described as an autoantigen to which antibodies were produced in a patient with scleroderma-polymyositis overlap syndrome, and was later found in the sera of patients with other rheumatic diseases. Both subunits of the Ku protein have been cloned, and a number of functions have been proposed for Ku, including cell signaling, DNA replication and transcriptional activation.

Synonyms:

TLAA, G22P2, CTCBF, CTC85

Product images:


Western blot (WB) analysis of XRCC5 antibody in extracts from Jurkat cells.



Immunohistochemistry (IHC) analyzes of XRCC5 antibody in paraffin-embedded human breast carcinoma tissue.