

## Product datasheet for **AP06474PU-N**

### Ubiquitin (UBB) Rabbit Polyclonal Antibody

#### Product data:

Product Type:	Primary Antibodies
Applications:	IHC, WB
Recommended Dilution:	<b>Western blot:</b> 1/500-1/1000. <b>Immunohistochemistry on Paraffin Sections:</b> 1/50-1/200.
Reactivity:	Human, Mouse, Rat
Host:	Rabbit
Clonality:	Polyclonal
Immunogen:	Synthetic peptide, corresponding to amino acids 11-60 of Human Ubiquitin.
Specificity:	This antibody detects endogenous levels of Ubiquitin protein.
Formulation:	Phosphate buffered saline (PBS), pH~7.2 State: Aff - Purified State: Liquid purified Ig fraction (> 95% pure by SDS-PAGE) Preservative: 0.05% Sodium Azide
Concentration:	1.0 mg/ml
Purification:	Affinity Chromatography using epitope-specific immunogen.
Conjugation:	Unconjugated
Storage:	Store the antibody undiluted at 2-8°C for one month or (in aliquots) at -20°C for longer. Avoid repeated freezing and thawing.
Stability:	Shelf life: one year from despatch.
Predicted Protein Size:	~8.5 kDa
Gene Name:	ubiquitin B
Database Link:	<a href="#">Entrez Gene 7314 Human P0CG47</a>



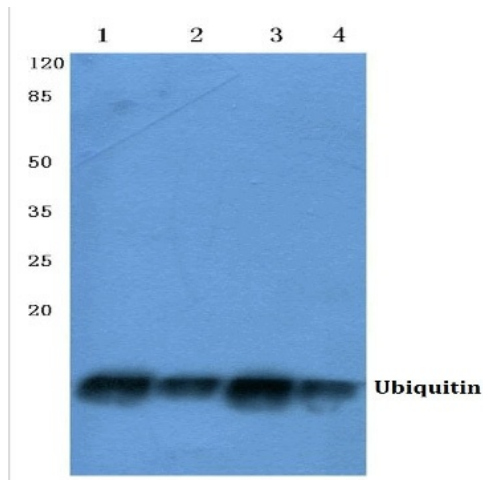
[View online »](#)

**Background:**

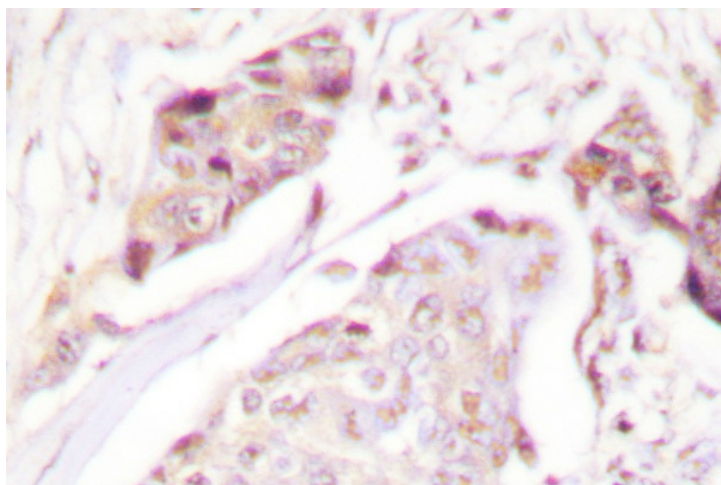
Ubiquitin is a conserved polypeptide unit that plays an important role in the ubiquitin-proteasome pathway. Ubiquitin can be covalently linked to many cellular proteins by the ubiquitination process, which targets proteins for degradation by the 26S proteasome. Three components are involved in the target protein-ubiquitin conjugation process. Ubiquitin is first activated by forming a thiolester complex with the activation component E1; the activated ubiquitin is subsequently transferred to the ubiquitin-carrier protein E2, then from E2 to ubiquitin ligase E3 for final delivery to the epsilon-NH<sub>2</sub> of the target protein lysine residue. The ubiquitin-proteasome pathway has been implicated in a wide range of normal biological processes and in disease-related abnormalities. Several proteins such as I $\kappa$ B, p53, cdc25a and Bcl-2 have been shown to be targets for the ubiquitination-proteasome process as part of regulation of cell cycle progression, differentiation, cell stress response and apoptosis.

**Synonyms:**

UBB, Polyubiquitin-B

**Product images:**

Western blot (WB) analysis of Ubiquitin Antibody at 1/500 dilution: Lane 1: HeLa cell lysate treated with UV. Lane 2: HEK293T cell lysate. Lane 3: NIH-3T3 cell lysate treated with UV. Lane 4: Rat kidney tissue lysate.



Immunohistochemistry analysis of Ubiquitin Antibody in paraffin-embedded human breast carcinoma tissue.