

Product datasheet for **AP06473PU-S**

Ube1L (UBA7) Rabbit Polyclonal Antibody

Product data:

| | |
|-------------------------|---|
| Product Type: | Primary Antibodies |
| Applications: | IHC, WB |
| Recommended Dilution: | Western blot: 1/500-1/1000. Immunohistochemistry on paraffin sections: 1/50-1/200. |
| Reactivity: | Human |
| Host: | Rabbit |
| Clonality: | Polyclonal |
| Specificity: | This antibody detects endogenous levels of UBE1L protein. (region surrounding Glu996) |
| Formulation: | Phosphate buffered saline (PBS), pH 7.2. State: Aff - Purified State: Liquid purified Ig fraction Preservative: 0.05% sodium azide |
| Concentration: | 1.0 mg/ml |
| Purification: | Affinity-chromatography using epitope-specific immunogen and the purity is > 95% (by SDS-PAGE) |
| Conjugation: | Unconjugated |
| Storage: | Store undiluted at 2-8°C for one month or (in aliquots) at -20°C for longer. Avoid repeated freezing and thawing. |
| Stability: | Shelf life: one year from despatch. |
| Predicted Protein Size: | ~ 112 kDa |
| Gene Name: | ubiquitin like modifier activating enzyme 7 |
| Database Link: | Entrez Gene 7318 Human P41226 |



[View online »](#)

Background:

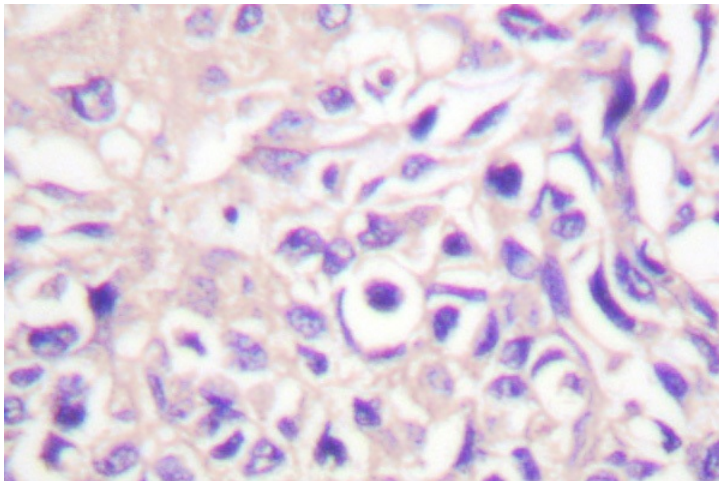
The ubiquitin activating enzyme E1 (UBE1) catalyzes the first step in ubiquitin conjugation to mark cellular proteins for degradation. UBE1 activates ubiquitin by first adenylating with ATP its carboxy-terminal glycine residue and thereafter linking this residue to the side chain of a cysteine residue in E1, yielding an ubiquitin-E1 thioester and free AMP. UBE1 is an example of an X-Y homologous gene, which is X-linked with a distinct Y-linked gene in many mammals. However, no UBE1 homolog is detectable on the human Y chromosome. UBE1 is thought to escape X inactivation in humans.

Synonyms:

Ubiquitin-activating enzyme 7, UBE2

Product images:

Western blot (WB) analysis of UBE1L antibody (Cat.-No.: [AP06473PU-N]) in extracts from HeLa cells.



Immunohistochemistry (IHC) analyzes of UBE1L antibody (Cat.-No.: [AP06473PU-N]) in paraffin-embedded human lung carcinoma tissue.