

Product datasheet for **AP06473PU-M**

Ube1L (UBA7) Rabbit Polyclonal Antibody

Product data:

Product Type:	Primary Antibodies
Applications:	IHC, WB
Recommended Dilution:	Western blot: 1/500-1/1000. Immunohistochemistry on paraffin sections: 1/50-1/200.
Reactivity:	Human
Host:	Rabbit
Clonality:	Polyclonal
Specificity:	This antibody detects endogenous levels of UBE1L protein. (region surrounding Glu996)
Formulation:	Phosphate buffered saline (PBS), pH 7.2. State: Aff - Purified State: Liquid purified Ig fraction Preservative: 0.05% sodium azide
Concentration:	1.0 mg/ml
Purification:	Affinity-chromatography using epitope-specific immunogen and the purity is > 95% (by SDS-PAGE)
Conjugation:	Unconjugated
Storage:	Store undiluted at 2-8°C for one month or (in aliquots) at -20°C for longer. Avoid repeated freezing and thawing.
Stability:	Shelf life: one year from despatch.
Predicted Protein Size:	~ 112 kDa
Gene Name:	ubiquitin like modifier activating enzyme 7
Database Link:	Entrez Gene 7318 Human P41226



[View online »](#)

Background:

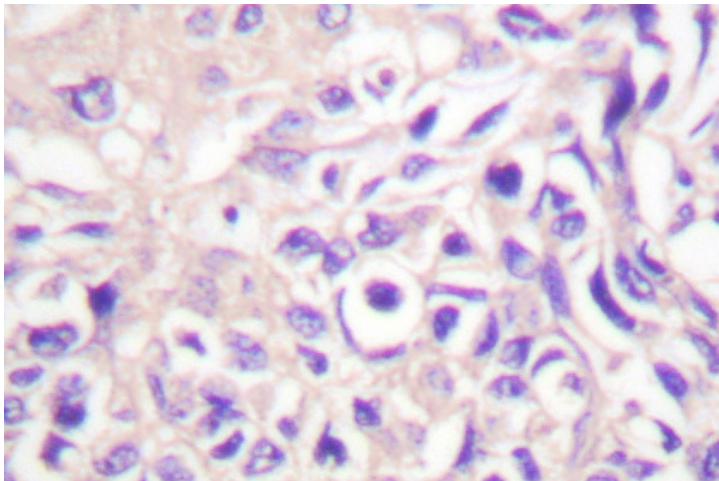
The ubiquitin activating enzyme E1 (UBE1) catalyzes the first step in ubiquitin conjugation to mark cellular proteins for degradation. UBE1 activates ubiquitin by first adenylating with ATP its carboxy-terminal glycine residue and thereafter linking this residue to the side chain of a cysteine residue in E1, yielding an ubiquitin-E1 thioester and free AMP. UBE1 is an example of an X-Y homologous gene, which is X-linked with a distinct Y-linked gene in many mammals. However, no UBE1 homolog is detectable on the human Y chromosome. UBE1 is thought to escape X inactivation in humans.

Synonyms:

Ubiquitin-activating enzyme 7, UBE2

Product images:


Western blot (WB) analysis of UBE1L antibody (Cat.-No.: [AP06473PU-N]) in extracts from HeLa cells.



Immunohistochemistry (IHC) analyzes of UBE1L antibody (Cat.-No.: [AP06473PU-N]) in paraffin-embedded human lung carcinoma tissue.