

Product datasheet for **AP06472PU-S**

UBA2 Rabbit Polyclonal Antibody

Product data:

Product Type:	Primary Antibodies
Applications:	IF, IHC, WB
Recommended Dilution:	Western blot: 1/500-1/1000. Immunohistochemistry on paraffin sections: 1/50-1/200. Immunofluorescence: 1/50-1/200.
Reactivity:	Human
Host:	Rabbit
Clonality:	Polyclonal
Specificity:	This antibody detects endogenous levels of Uba2 protein. (region surrounding Ser621)
Formulation:	Phosphate buffered saline (PBS), pH 7.2. State: Aff - Purified State: Liquid purified Ig fraction Preservative: 0.05% sodium azide
Concentration:	1.0 mg/ml
Purification:	Affinity-chromatography using epitope-specific immunogen and the purity is > 95% (by SDS-PAGE)
Conjugation:	Unconjugated
Storage:	Store undiluted at 2-8°C for one month or (in aliquots) at -20°C for longer. Avoid repeated freezing and thawing.
Stability:	Shelf life: one year from despatch.
Predicted Protein Size:	~ 71 kDa
Gene Name:	ubiquitin like modifier activating enzyme 2
Database Link:	Entrez Gene 10054 Human Q9UBT2



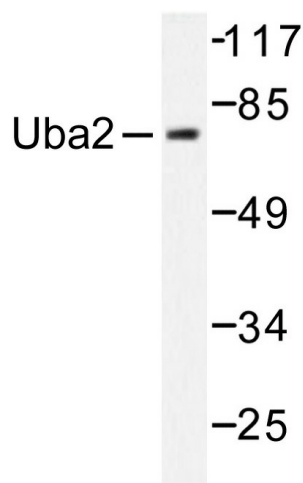
[View online »](#)

Background:

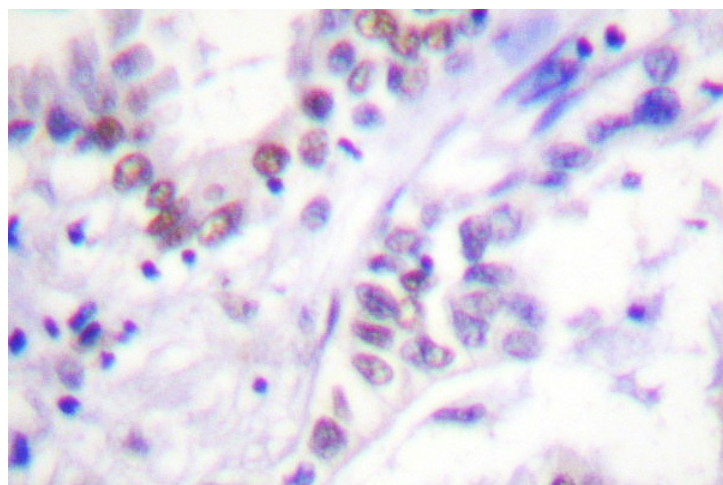
The human UBiquitin Activating domain 2 (UBA2) gene is located on chromosome 19q12. Human UBA2 could form a beta mercaptoethanol-sensitive conjugate with members of the sentrin family, but not with ubiquitin of NEDD8 in the presence of AOS1. The recombinant proteins, Sua1p and hUba2, form a complex. In this complex, hUba2 binds SUMO-1, which gives the complex the activity of the SUMO-1 activating enzyme. Therefore, UBA2 has been found to be a component of the sentrin-activating enzyme complex.

Synonyms:

SUMO-activating enzyme subunit 2, UBLE1B, ARX, HRIHFB2115

Product images:

Western blot (WB) analysis of Uba2 antibody (Cat.-No.: [AP06472PU-N]) in extracts from 293 cells treated with UV 5'.



Immunohistochemistry (IHC) analyzes of Uba2 antibody (Cat.-No. [AP06472PU-N]) in paraffin-embedded human lung carcinoma tissue.