

Product datasheet for **AP06470PU-M**

gamma Tubulin (TUBG1) Rabbit Polyclonal Antibody

Product data:

Product Type:	Primary Antibodies
Applications:	IHC, WB
Recommended Dilution:	Western blot: 1/500-1/1000. Immunohistochemistry on Paraffin Sections: 1/50-1/200.
Reactivity:	Human, Mouse, Rat
Host:	Rabbit
Clonality:	Polyclonal
Immunogen:	Synthetic peptide, corresponding to amino acids 380-430 of Human Tubulin γ .
Specificity:	Tubulin gamma antibody detects endogenous levels of Tubulin gamma protein. (region surrounding Phe414)
Formulation:	Phosphate buffered saline (PBS), pH~7.2 State: Aff - Purified State: Liquid purified Ig fraction (> 95% pure by SDS-PAGE). Preservative: 15 mM Sodium Azide
Concentration:	1.0 mg/ml
Purification:	Affinity Chromatography using epitope-specific immunogen.
Conjugation:	Unconjugated
Storage:	Store undiluted at 2-8°C for one month or (in aliquots) at -20°C for longer. Avoid repeated freezing and thawing.
Stability:	Shelf life: One year from despatch.
Predicted Protein Size:	~ 51 kDa
Gene Name:	tubulin gamma 1
Database Link:	Entrez Gene 103733 Mouse Entrez Gene 252921 Rat Entrez Gene 7283 Human P23258



[View online »](#)

Background:

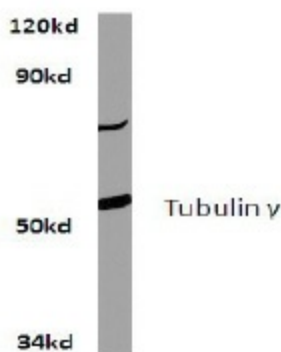
TUB4, the gene for *Saccharomyces cerevisiae* gamma-Tubulin, encodes a 473 amino acid structural protein that localizes to the spindle pole body. gamma Tubulin, an essential protein for cell growth, organizes microtubule arrays in the nucleus and cytoplasm. gamma Tubulin-depleted cells fail to form functional spindles and arrest during nuclear division. gamma Tubulin associates with spindle body components Spc97 and Spc98 to form the gamma Tubulin complex. The budding yeast gamma Tubulin complex contains one molecule each of Spc97 and Spc98 and two molecules of gamma Tubulin. In the SPB, Spc110 binds Spc97 and Spc98 of the gamma Tubulin complex. 2D gel analysis indicates five isoforms of gamma Tubulin. The phosphorylation of gamma Tubulin at Tyr 445 plays a regulatory role in microtubule formation. The incidence rate for this phosphorylation event peaks during G1.

Synonyms:

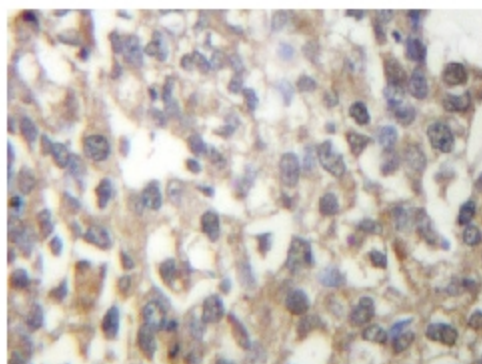
Tubulin gamma-1 chain, Gamma-1-tubulin, GCP-1

Protein Families:

Druggable Genome

Product images:


Western blot analysis of Tubulin gamma antibody (Cat.-No [AP06470PU-N]) in extracts from A549 cells at 1/500 dilution.



Immunohistochemistry analysis of Tubulin gamma antibody (Cat.-No [AP06470PU-N]) in paraffin-embedded human breast carcinoma tissue.