

## Product datasheet for **AP06466PU-M**

### Topoisomerase II beta (TOP2B) Rabbit Polyclonal Antibody

#### Product data:

Product Type:	Primary Antibodies
Applications:	IHC, WB
Recommended Dilution:	<b>Western blot:</b> 1/500-1/1000. <b>Immunohistochemistry on Paraffin Sections:</b> 1/50-1/200.
Reactivity:	Human, Mouse
Host:	Rabbit
Clonality:	Polyclonal
Specificity:	This antibody detects endogenous levels of Topoisomerase II $\beta$ protein. (region surrounding Ala32)
Formulation:	Phosphate buffered saline (PBS), pH~7.2 State: Aff - Purified State: Liquid purified Ig fraction (> 95% pure by SDS-PAGE) Preservative: 0.05% Sodium Azide
Concentration:	1.0 mg/ml
Purification:	Affinity Chromatography using epitope-specific immunogen
Conjugation:	Unconjugated
Storage:	Store undiluted at 2-8°C for one month or (in aliquots) at -20°C for longer. Avoid repeated freezing and thawing.
Stability:	Shelf life: one year from despatch.
Predicted Protein Size:	~183 kDa
Gene Name:	topoisomerase (DNA) II beta
Database Link:	<a href="#">Entrez Gene 7155 Human Q02880</a>



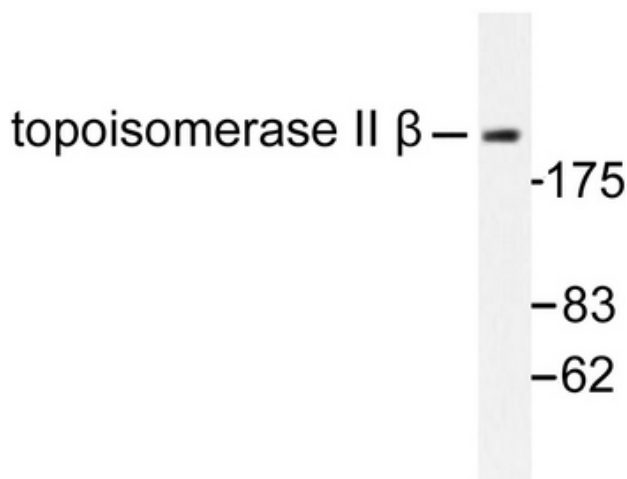
[View online »](#)

**Background:**

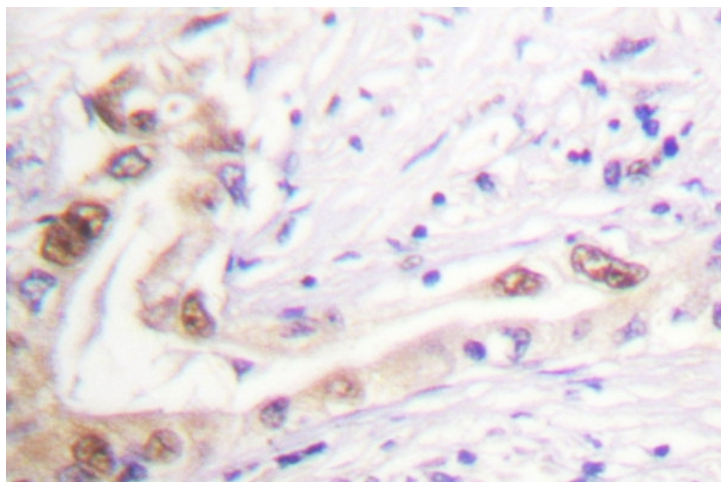
Topoisomerases are nuclear enzymes involved in a variety of cellular activities such as chromosome condensation, DNA replication, transcription, recombination and segregation at mitosis. Human topoisomerase I is a 100kD protein capable of relaxing positively and negatively supercoiled DNA by performing a transient single stranded nick which is then religated at the end of the reaction. It has been shown that the enzyme is located in regions of the genome that are undergoing active RNA synthesis, where it probably reduces superhelical stresses in the DNA, enabling RNA polymerase to function properly. Both DNA topoisomerases I and II have been found to be targets of autoantibodies in the sera of patients with certain autoimmune diseases such as systemic lupus erythematosus and also of some anti tumor drugs and antibiotics. Elevated levels of DNA topoisomerase I, detected by transfer assays, have been demonstrated in colorectal tumors compared with normal colon mucosa as a result of increased transcription or mRNA stability.

**Synonyms:**

DNA topoisomerase 2-beta, DNA topoisomerase II beta isozyme

**Product images:**


Western blot (WB) analysis of Topoisomerase II  $\beta$  antibody (Cat.-No.: [AP06466PU-N]) in extracts from Jurkat cells.



Immunohistochemistry analyzes of Topoisomerase II  $\beta$  antibody (Cat.-No.: [AP06466PU-N]) in paraffin-embedded human lung carcinoma tissue.