

Product datasheet for **AP06462PU-M**

SENP8 Rabbit Polyclonal Antibody

Product data:

Product Type:	Primary Antibodies
Applications:	IHC, WB
Recommended Dilution:	Western blot: 1/500-1/1000. Immunohistochemistry on paraffin sections: 1/50-1/200.
Reactivity:	Human, Mouse, Rat
Host:	Rabbit
Clonality:	Polyclonal
Specificity:	This antibody detects endogenous levels of SENP8 protein. (region surrounding Thr191)
Formulation:	Phosphate buffered saline (PBS), pH 7.2. State: Aff - Purified State: Liquid purified Ig fraction Preservative: 0.05% sodium azide
Concentration:	1.0 mg/ml
Purification:	Affinity-chromatography using epitope-specific immunogen and the purity is > 95% (by SDS-PAGE)
Conjugation:	Unconjugated
Storage:	Store undiluted at 2-8°C for one month or (in aliquots) at -20°C for longer. Avoid repeated freezing and thawing.
Stability:	Shelf life: one year from despatch.
Predicted Protein Size:	~ 27 kDa
Gene Name:	SUMO/sentrin peptidase family member, NEDD8 specific
Database Link:	Entrez Gene 71599 Mouse Entrez Gene 315723 Rat Entrez Gene 123228 Human Q96LD8



[View online »](#)

Background:

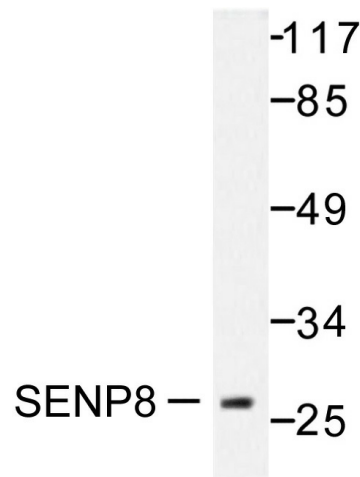
SUMO (small ubiquitin-related modifier), a member of the ubiquitin-like protein family, regulates diverse cellular functions of a variety of target proteins including transcription, DNA repair, nucleocytoplasmic trafficking and chromosome segregation. SUMO precursor proteins undergo cleavage of the residues after the “GG” region by SUMO-specific proteases in maturation. This cleavage of the precursor is a prerequisite for subsequent sumoylation. The sentrin-specific (or SUMO-specific) protease (SENP) proteins belong to the peptidase C48 family and include SENP1-3 and SENP5-8. SENP1, SENP2 and SENP3 degrade UBL1 and SMT3H2 conjugates and subsequently release the monomers from sumoylated substrates. HIPK2 is a desumoylation target for SENP1 which shuttles between the cytoplasm and the nucleus. Mutation analyses reveal that SENP1 contains the nuclear export sequence (NES) within the extreme carboxyl-terminal region, and SENP1 is exported to the cytoplasm in a NES-dependent manner. SENP2 has been implicated as a downregulator of CTNNB1 levels and may therefore be a modulator of the Wnt pathway. SUMO protease SENP3 reverses the sumoylation of MEF-2 to augment its transcriptional and myogenic activities. SENP5 localizes to the nucleolus and preferentially processes SUMO-3. It is thought to play a role in mitosis and/or cytokinesis. SENP6 localizes to the cytoplasm and releases SUMO-1. Expression of SENP6 is higher in reproductive organs, indicating that it may mediate processes related to reproduction. SENP8 is involved in the release of sentrins.

Synonyms:

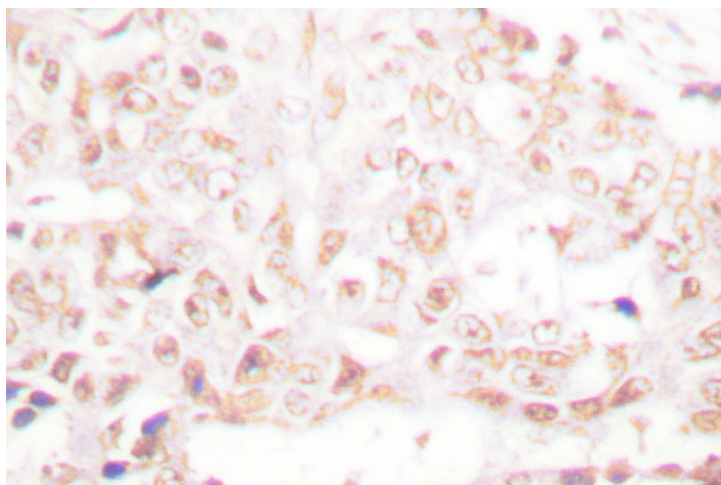
Sentrin-specific protease 8, Deneddylase-1, DEN1, NEDP1, PRSC2

Protein Families:

Druggable Genome, Protease

Product images:


Western blot (WB) analysis of SENP8 antibody (Cat.-No.: [AP06462PU-N]) in extracts from HuvEc cells.



Immunohistochemistry (IHC) analyzes of SENP8 antibody (Cat.-No.: [AP06462PU-N]) in paraffin-embedded human breast carcinoma tissue.