

Product datasheet for **AP06460PU-N**

SENP6 Rabbit Polyclonal Antibody

Product data:

Product Type:	Primary Antibodies
Applications:	IHC
Recommended Dilution:	Immunohistochemistry on paraffin sections 1/50-1/200.
Reactivity:	Human
Host:	Rabbit
Clonality:	Polyclonal
Specificity:	This antibody detects endogenous levels of SENP6 protein. (region surrounding Lys1077)
Formulation:	Phosphate buffered saline (PBS), pH~7.2 State: Aff - Purified State: Liquid purified Ig fraction (> 95% pure by SDS-PAGE). Preservative: 0.05% Sodium Azide
Concentration:	1.0 mg/ml
Purification:	Affinity Chromatography using epitope-specific immunogen.
Conjugation:	Unconjugated
Storage:	Store undiluted at 2-8°C for one month or (in aliquots) at -20°C for longer. Avoid repeated freezing and thawing.
Stability:	Shelf life: one year from despatch.
Gene Name:	SUMO1/sentrin specific peptidase 6
Database Link:	Entrez Gene 26054 Human Q9GZR1



[View online »](#)

Background:

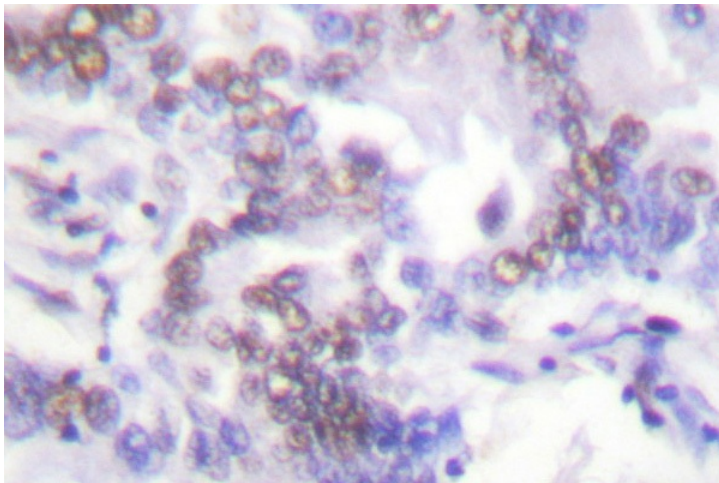
Covalent attachment of one protein to another is one of the more prominent posttranslational modifications in respects to size and ubiquity – to which eukaryotic proteins are subject. Ubiquitin is the most familiar of the protein modifiers and its activation and transfer to target proteins has been studied for over two decades. Recently a new group of ubiquitin-like (Ubl) proteins have come to light. One of the most intriguing of them is SUMO (small ubiquitin-like modifier, ~12kDa) also known as Sentrin. SUMO family has been described in vertebrates: SUMO-1 and the closest homologs SUMO-2 and SUMO-3. SUMO have been shown to bind and regulate mammalian SP-RINGs (such as Mdm2, PIAS and PML), RanGAP1, RanBP2, p53, p73, HIPK2, TEL, c-Jun, Fas, Daxx, TNFRI, Topo-I, Topo-II, WRN, Sp100, IκB-alpha, Androgen receptor (AR), GLUT1/4, Drosophila Ttk69, Dorsal, CaMK, yeast Septins, and viral CMV-IE1/2, EBV-BZLF1, HPV/BPV-E1. These bindings implicate SUMO in the stabilization of the target proteins and/or their localization to subcellular complexes. SUMO research enters now an exciting phase with a promise to help understanding how cells orchestrate the complexities of rapidly regulating protein level and activity.

Synonyms:

Sentrin-specific protease 6, KIAA0797, SSP1, SUSP1

Protein Families:

Druggable Genome, Protease

Product images:

Immunohistochemistry (IHC) analyzes of SENP6 antibody (Cat.-No.: AP06460PU-N) in paraffin-embedded human lung carcinoma tissue.