

Product datasheet for **AP06458PU-M**

SENP3 Rabbit Polyclonal Antibody

Product data:

Product Type:	Primary Antibodies
Applications:	IHC, WB
Recommended Dilution:	Western blot: 1/500-1/1000. Immunohistochemistry on paraffin sections: 1/50-1/200.
Reactivity:	Human, Mouse
Host:	Rabbit
Clonality:	Polyclonal
Specificity:	This antibody detects endogenous levels of SENP3 protein. (region surrounding Tyr24)
Formulation:	Phosphate buffered saline (PBS), pH 7.2. State: Aff - Purified State: Liquid purified Ig fraction Preservative: 0.05% sodium azide
Concentration:	1.0 mg/ml
Purification:	Affinity-chromatography using epitope-specific immunogen and the purity is > 95% (by SDS-PAGE)
Conjugation:	Unconjugated
Storage:	Store undiluted at 2-8°C for one month or (in aliquots) at -20°C for longer. Avoid repeated freezing and thawing.
Stability:	Shelf life: one year from despatch.
Predicted Protein Size:	~ 80 kDa
Gene Name:	SUMO1/sentrin/SMT3 specific peptidase 3
Database Link:	Entrez Gene 80886 Mouse Entrez Gene 26168 Human Q9H4L4



[View online »](#)

Background:

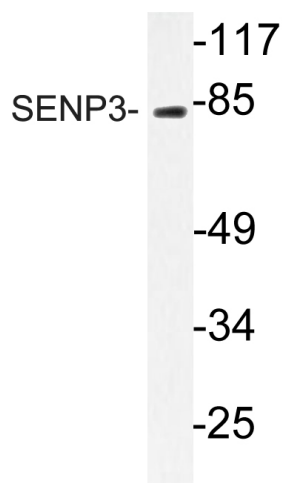
SUMO (small ubiquitin-related modifier), a member of the ubiquitin-like protein family, regulates diverse cellular functions of a variety of target proteins including transcription, DNA repair, nucleocytoplasmic trafficking and chromosome segregation. SUMO precursor proteins undergo cleavage of the residues after the “GG” region by SUMO-specific proteases in maturation. This cleavage of the precursor is a prerequisite for subsequent sumoylation. The sentrin-specific (or SUMO-specific) protease (SEN3) proteins belong to the peptidase C48 family and include SENP1-3 and SENP5-8. SENP1, SENP2 and SENP3 degrade UBL1 and SMT3H2 conjugates and subsequently release the monomers from sumoylated substrates.

Synonyms:

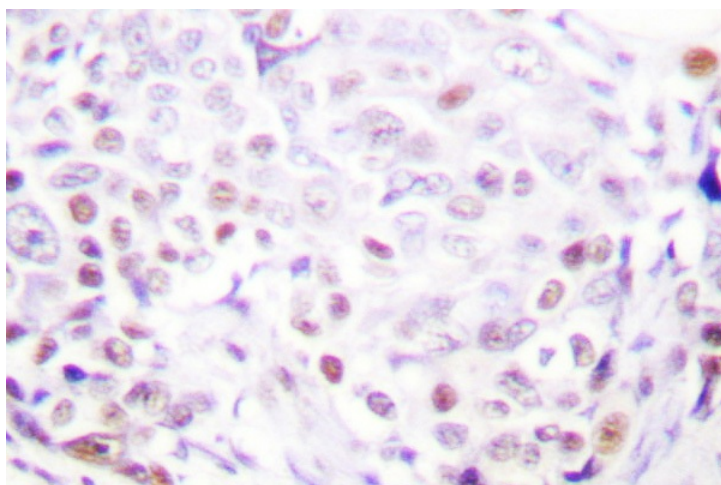
Sentrin-specific protease 3, SUSP3, SSP3

Protein Families:

Druggable Genome, Protease

Product images:


Western blot (WB) analysis of SENP3 antibody (Cat.-No.: [AP06458PU-N]) in extracts from Jurkat cells.



Immunohistochemistry (IHC) analyzes of SENP3 antibody (Cat.-No.: [AP06458PU-N]) in paraffin-embedded human breast carcinoma tissue.