

Product datasheet for **AP06457PU-N**

SENP2 Rabbit Polyclonal Antibody

Product data:

Product Type:	Primary Antibodies
Applications:	IHC, WB
Recommended Dilution:	Western blot: 1/500-1/1000. Immunohistochemistry on paraffin sections: 1/50-1/200.
Reactivity:	Human, Mouse, Rat
Host:	Rabbit
Clonality:	Polyclonal
Specificity:	This antibody detects endogenous levels of SENP2 protein. (region surrounding Leu512)
Formulation:	Phosphate buffered saline (PBS), pH 7.2. State: Aff - Purified State: Liquid purified Ig fraction Preservative: 0.05% sodium azide
Concentration:	1.0 mg/ml
Purification:	The antibody was affinity-purified from rabbit antiserum by affinity-chromatography using epitope-specific immunogen and the purity is > 95% (by SDS-PAGE)
Conjugation:	Unconjugated
Storage:	Store undiluted at 2-8°C for one month or (in aliquots) at -20°C for longer. Avoid repeated freezing and thawing.
Stability:	Shelf life: one year from despatch.
Predicted Protein Size:	~ 68 kDa
Gene Name:	SUMO1/sentrin/SMT3 specific peptidase 2
Database Link:	Entrez Gene 75826 Mouse Entrez Gene 78973 Rat Entrez Gene 59343 Human Q9HC62



[View online »](#)

Background:

SUMO (small ubiquitin-related modifier), a member of the ubiquitin-like protein family, regulates diverse cellular functions of a variety of target proteins including transcription, DNA repair, nucleocytoplasmic trafficking and chromosome segregation. SUMO precursor proteins undergo cleavage of the residues after the “GG” region by SUMO-specific proteases in maturation. This cleavage of the precursor is a prerequisite for subsequent sumoylation. The sentrin-specific (or SUMO-specific) protease (SENP) proteins belong to the peptidase C48 family and include SENP1-3 and SENP5-8. SENP1, SENP2 and SENP3 degrade UBL1 and SMT3H2 conjugates and subsequently release the monomers from sumoylated substrates. HIPK2 is a desumoylation target for SENP1 which shuttles between the cytoplasm and the nucleus. Mutation analyses reveal that SENP1 contains the nuclear export sequence (NES) within the extreme carboxyl-terminal region, and SENP1 is exported to the cytoplasm in a NES-dependent manner. SENP2 has been implicated as a downregulator of CTNNB1 levels and may therefore be a modulator of the Wnt pathway. SUMO protease SENP3 reverses the sumoylation of MEF-2 to augment its transcriptional and myogenic activities. SENP5 localizes to the nucleolus and preferentially processes SUMO-3. It is thought to play a role in mitosis and/or cytokinesis.

Synonyms:

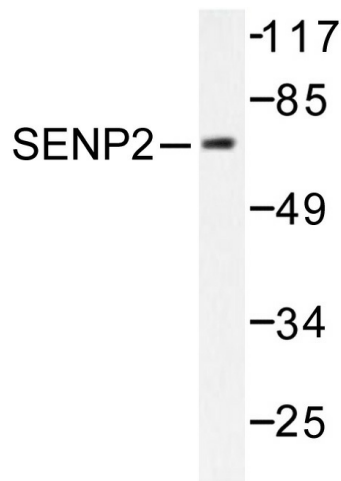
Sentrin-specific protease 2, Smt3ip2, Axam2, KIAA1331

Protein Families:

Druggable Genome, Protease

Protein Pathways:

Wnt signaling pathway

Product images:

Western blot (WB) analysis of SENP2 antibody (Cat.-No.: AP06457PU-N) in extracts from MDA-MB-435 cells.