

Product datasheet for **AP06447PU-S**

EDD (UBR5) Rabbit Polyclonal Antibody

Product data:

Product Type:	Primary Antibodies
Applications:	IHC, WB
Recommended Dilution:	Western blot: 1/500-1/1000. Immunohistochemistry on paraffin sections: 1/50-1/200.
Reactivity:	Human, Mouse
Host:	Rabbit
Clonality:	Polyclonal
Immunogen:	Synthetic peptide, corresponding to amino acids 1-50 of Human HYD.
Specificity:	This antibody detects endogenous levels of EDD protein. (region surrounding Thr14)
Formulation:	Phosphate buffered saline (PBS), pH 7.2 with 50% Glycerol. State: Aff - Purified State: Liquid purified Ig fraction Preservative: 0.02% Sodium Azide
Concentration:	1.0 mg/ml
Purification:	Affinity-chromatography using epitope-specific immunogen and the purity is > 95% (by SDS-PAGE)
Conjugation:	Unconjugated
Storage:	Store undiluted at 2-8°C for one month or (in aliquots) at -20°C for longer. Avoid repeated freezing and thawing.
Stability:	Shelf life: one year from despatch.
Predicted Protein Size:	~ 309 kDa
Gene Name:	ubiquitin protein ligase E3 component n-recognin 5
Database Link:	Entrez Gene 70790 Mouse Entrez Gene 51366 Human O95071



[View online »](#)

Background:

EDD (for E3 identified by Differential Display) is a progestin-regulated gene that was isolated from T-47D human breast cancer cells. Based on sequence homology, EDD appears to be a human homolog of the *Drosophila* hyperplastic discs (*hyd*) gene, a tumor suppressor gene that is required for control of imaginal disc growth (2). EDD contains a HECT domain in the carboxy terminus. HECT domain-containing proteins function as ubiquitin-protein ligases, or E3 enzymes. EDD has been shown to bind to ubiquitin, and like other HECT family proteins, may function as an E3 ubiquitin-protein ligase.

Synonyms:

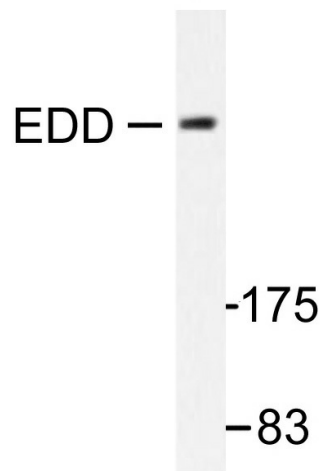
EDD, EDD1, KIAA0896

Protein Families:

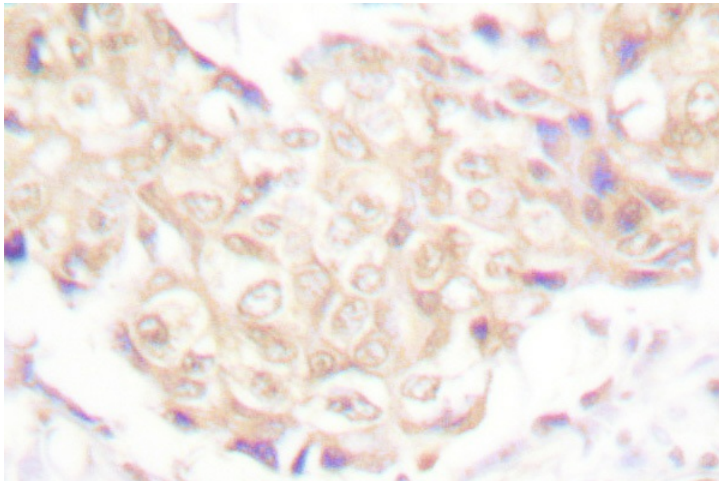
Druggable Genome

Protein Pathways:

Ubiquitin mediated proteolysis

Product images:

Western blot (WB) analysis of EDD antibody in extracts from A549 cells.



Immunohistochemistry (IHC) analyzes of EDD antibody in paraffin-embedded human breast carcinoma tissue.