

Product datasheet for **AP06445PU-M**

CD40 Rabbit Polyclonal Antibody

Product data:

Product Type:	Primary Antibodies
Applications:	IHC, WB
Recommended Dilution:	Western blot: 1/500-1/1000. Immunohistochemistry on paraffin sections 1/50-1/200.
Reactivity:	Human, Mouse
Host:	Rabbit
Clonality:	Polyclonal
Immunogen:	Synthetic peptide, corresponding to amino acids 230-280 of Human CD40.
Specificity:	This antibody detects endogenous levels of CD40 protein. (region surrounding Gln259)
Formulation:	Phosphate buffered saline (PBS), pH~7.2 State: Aff - Purified State: Liquid purified Ig fraction (> 95% pure by SDS-PAGE). Preservative: 0.05% Sodium Azide
Concentration:	1.0 mg/ml
Purification:	Affinity Chromatography using epitope-specific immunogen.
Conjugation:	Unconjugated
Storage:	Store undiluted at 2-8°C for one month or (in aliquots) at -20°C for longer. Avoid repeated freezing and thawing.
Stability:	Shelf life: One year from despatch.
Predicted Protein Size:	~ 30 kDa
Gene Name:	CD40 molecule
Database Link:	<u>Entrez Gene 958 Human P25942</u>

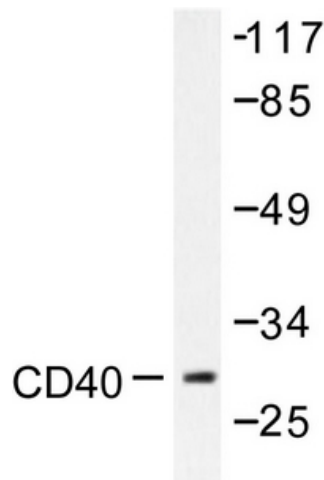
[View online »](#)

Background:

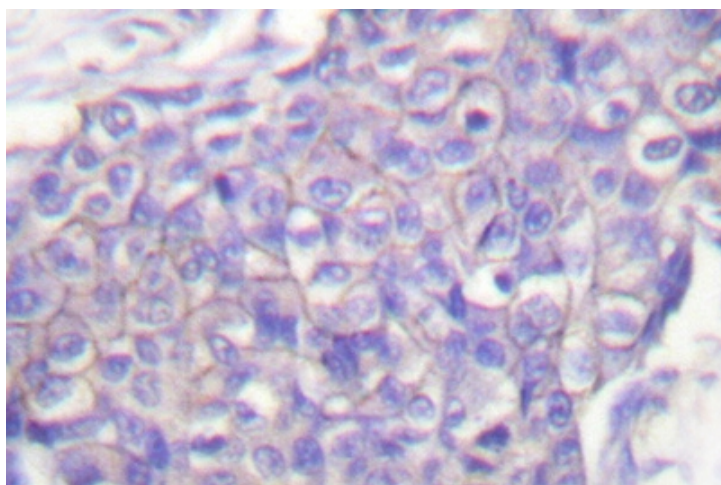
Resting B cells can be activated and clonally expanded into antibody-producing cells in response to a combination of cell contact and soluble signals provided by primed helper T (Th) cells. While cytokines IL-4 and IL-13 alone are inadequate for B cell activation, contact with Th cells seems to be sufficient for delivery of proliferative signals. A receptor ligand pair central to the transmission of this signal is CD40, expressed on the surface of B cells, together with CD40L, expressed on activated T cells. In the presence of such stimulus, IL-4 and IL-13 are capable of triggering immunoglobulin class switching and secretion of IgE. B cells are sensitive to these cytokines only subsequent to CD40/CD40L-driven DNA synthesis. A downstream mediator of the CD40 signaling pathway, designated CRAF, is a member of an expanding family of proteins that contain a conserved cysteine- and histidine-rich RING finger motif. Other members of the family include TRAF1 and TRAF2. The latter proteins have been shown to regulate TNF-R2 as well as CD40 signaling through activation of the NFkB family of transcription factors.

Synonyms:

TNFRSF5, CDw40, Bp50

Product images:


Western blot (WB) analysis of CD40 antibody in extracts from COS7 cells.



Immunohistochemistry (IHC) analyzes of CD40 antibody in paraffin-embedded human breast carcinoma brain tissue.