

Product datasheet for **AP06444PU-N**

SAE1 Rabbit Polyclonal Antibody

Product data:

Product Type:	Primary Antibodies
Applications:	IF, IHC, WB
Recommended Dilution:	Western blot: 1/500-1/1000. Immunofluorescence: 1/50-1/200. Immunohistochemistry on paraffin sections: 1/50-1/200.
Reactivity:	Human, Mouse, Rat
Host:	Rabbit
Clonality:	Polyclonal
Immunogen:	Synthetic peptide, corresponding to amino acids 214-260 of Human SAE1.
Specificity:	This antibody detects endogenous levels of AOS1 protein. (region surrounding Leu247)
Formulation:	Phosphate buffered saline (PBS), pH 7.2. State: Aff - Purified State: Liquid purified Ig fraction Preservative: 0.05% sodium azide
Concentration:	1.0 mg/ml
Purification:	Affinity-chromatography using epitope-specific immunogen and the purity is > 95% (by SDS-PAGE)
Conjugation:	Unconjugated
Storage:	Store undiluted at 2-8°C for one month or (in aliquots) at -20°C for longer. Avoid repeated freezing and thawing.
Stability:	Shelf life: one year from despatch.
Predicted Protein Size:	~ 38 kDa
Gene Name:	SUMO1 activating enzyme subunit 1
Database Link:	Entrez Gene 10055 Human Q9UBE0



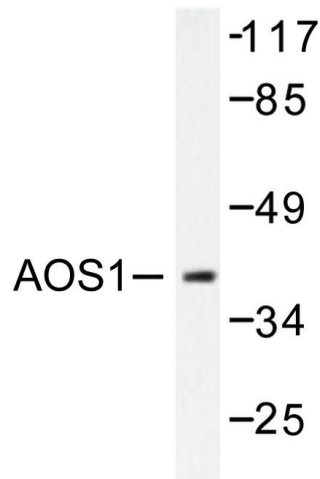
[View online »](#)

Background:

Proteolytic degradation by the ubiquitin (Ub) system is essential for normal cell cycle progression, cellular differentiation and stress responses. Proteins conjugated to Ub are marked for progressive degradation by the 26S Proteasome. Ubiquitin-like 1-activating enzyme E1A, also designated SUMO-1-activating enzyme or AOS-1, belongs to the ubiquitin-activating E1 family of proteins and plays an important role in the first step of the UBL1 conjugation pathway. AOS-1, which is a dimeric enzyme, functions as a UBL1 E1 ligase, mediating the ATP-dependent activation of UBL1. It can bind with UBLE1A and UBLE1B to form a heterodimer which can bind UBL1.

Synonyms:

SUA1, UBLE1A

Product images:

Western blot (WB) analysis of AOS1 antibody in extracts from 293 cells.