

Product datasheet for **AP06441PU-N**

Ki67 (MKI67) Rabbit Polyclonal Antibody

Product data:

Product Type:	Primary Antibodies
Applications:	IF, IHC
Recommended Dilution:	Immunofluorescence: 1/50-1/200. Immunohistochemistry on Paraffin Sections: 1/50-1/200.
Reactivity:	Human
Host:	Rabbit
Clonality:	Polyclonal
Immunogen:	Synthetic peptide, corresponding to amino acids C-terminus of Human Ki-67.
Specificity:	This antibody detects endogenous levels of Ki67 protein. (region surrounding Val3242)
Formulation:	Phosphate buffered saline (PBS), pH~7.2 State: Aff - Purified State: Liquid purified IgG fraction (> 95% pure by SDS-PAGE) Preservative: 0.05% Sodium Azide
Concentration:	1.0 mg/ml
Purification:	Affinity Chromatography using epitope-specific immunogen
Conjugation:	Unconjugated
Storage:	Store undiluted at 2-8°C for one month or (in aliquots) at -20°C for longer. Avoid repeated freezing and thawing.
Stability:	Shelf life: one year from despatch.
Predicted Protein Size:	~ 359 kDa
Gene Name:	marker of proliferation Ki-67
Database Link:	Entrez Gene 4288 Human P46013



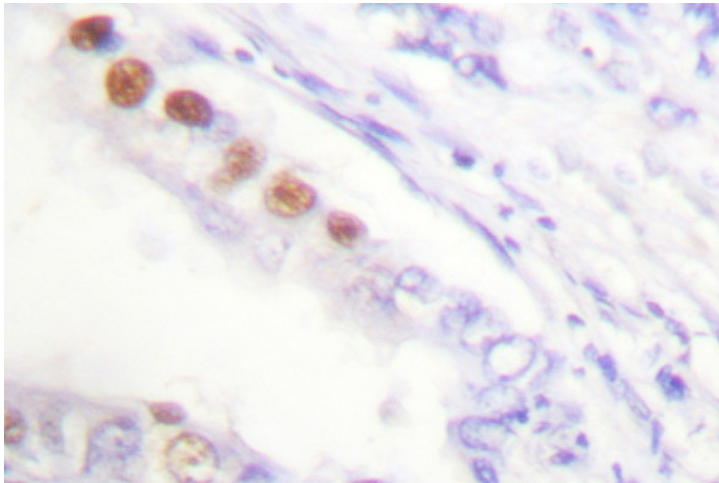
[View online »](#)

Background:

Ki-67 is a nuclear protein that is expressed in proliferating cells and may be required for maintaining cell proliferation. Ki-67 has been used as a marker for cell proliferation of solid tumors and some hematological malignancies. A correlation has been demonstrated between Ki-67 index and the histopathological grade of neoplasms. Assessment of Ki-67 expression in renal and ureter tumors shows a correlation between tumor proliferation and disease progression, thus making it possible to differentiate high-risk patients. Ki-67 expression may also prove to be important for distinguishing between malignant and benign peripheral nerve sheath tumors.

Synonyms:

Ki67 antigen, MKI67, Proliferation marker

Product images:

Immunohistochemistry (IHC) analyzes of Ki67 antibody in paraffin-embedded human lung carcinoma tissue.