

Product datasheet for **AP06435PU-M**

RSK1 p90 (RPS6KA1) Rabbit Polyclonal Antibody

Product data:

| | |
|-------------------------|---|
| Product Type: | Primary Antibodies |
| Applications: | IHC, WB |
| Recommended Dilution: | Western blot: 1/500-1/1000. Immunohistochemistry on paraffin sections: 1/50-1/200. |
| Reactivity: | Human, Mouse, Rat |
| Host: | Rabbit |
| Clonality: | Polyclonal |
| Immunogen: | Synthetic peptide, corresponding to amino acids 320-372 of Human Rsk-1. |
| Specificity: | This antibody detects endogenous levels of p90 RSK protein. (region surrounding Thr353) |
| Formulation: | Phosphate buffered saline (PBS), pH 7.2. State: Aff - Purified State: Liquid purified Ig fraction Preservative: 0.05% sodium azide |
| Concentration: | 1.0 mg/ml |
| Purification: | Affinity-chromatography using epitope-specific immunogen and the purity is > 95% (by SDS-PAGE) |
| Conjugation: | Unconjugated |
| Storage: | Store undiluted at 2-8°C for one month or (in aliquots) at -20°C for longer. Avoid repeated freezing and thawing. |
| Stability: | Shelf life: one year from despatch. |
| Predicted Protein Size: | ~ 83 kDa |
| Gene Name: | ribosomal protein S6 kinase A1 |
| Database Link: | Entrez Gene 6195 Human Q15418 |

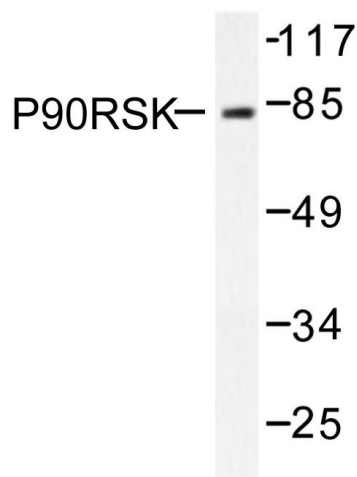
[View online »](#)

Background:

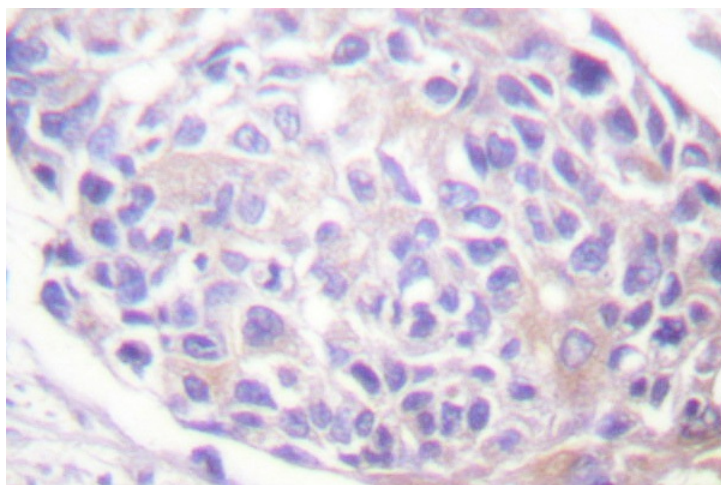
The 90 kDa family of ribosomal S6 kinases (Rsk), designated Rsk-1 (MAPKAP kinase-1), Rsk-2 and Rsk-3, are intracellular Serine/Threonine kinases that are important signaling intermediates in response to a broad range of ligand activated receptor tyrosine kinases. A unique feature common to the members of the Rsk family is that each possesses two non-identical complete kinase catalytic domains. An additional Rsk protein, Rsk-4, shows a high level of homology to the three previously isolated members of the human Rsk family. Rsk-4 is most abundantly expressed in brain and kidney and plays a role in normal neuronal development. The 70 kDa family of ribosomal S6 kinases includes p70 S6 kinase and p70 S6 kinase β , which are thought to have similar regulatory functions. MSK1 (also designated RLPK) is a novel Rsk-related protein, which, like the p90 Rsk family members, contains two non-identical complete kinase catalytic domains.

Synonyms:

Ribosomal S6 kinase 1, 90 kDa ribosomal protein S6 kinase 1, MAPKAPK1A, RSK1, RSK-1, p90RSK1

Product images:


Western blot (WB) analysis of p90 RSK antibody in extracts from 293 cells treated with PMA 125ng/ml 30'.



Immunohistochemistry (IHC) analyzes of p90 RSK antibody in paraffin-embedded human breast carcinoma tissue.