

Product datasheet for **AP06433PU-S**

Lamin A (LMNA) Rabbit Polyclonal Antibody

Product data:

Product Type:	Primary Antibodies
Applications:	IF, IHC, WB
Recommended Dilution:	Western blot: 1/500-1/1000. Immunofluorescence: 1/50-1/200. Immunohistochemistry on paraffin sections: 1/50-1/200.
Reactivity:	Human, Mouse, Rat
Host:	Rabbit
Clonality:	Polyclonal
Immunogen:	Synthetic peptide, corresponding to amino acids 351-400 of Human Lamin A/C.
Specificity:	This antibody detects endogenous levels of Lamin A/C protein. (region surrounding Arg386)
Formulation:	Phosphate buffered saline (PBS), pH 7.2. State: Aff - Purified State: Liquid purified Ig fraction (> 95% pure by SDS-PAGE). Preservative: 0.05% Sodium Azide
Concentration:	1.0 mg/ml
Purification:	Affinity Chromatography using epitope-specific immunogen.
Conjugation:	Unconjugated
Storage:	Store undiluted at 2-8°C for one month or (in aliquots) at -20°C for longer. Avoid repeated freezing and thawing.
Stability:	Shelf life: one year from despatch.
Predicted Protein Size:	~ 74,65 kDa
Gene Name:	lamin A/C
Database Link:	Entrez Gene 4000 Human P02545



[View online »](#)

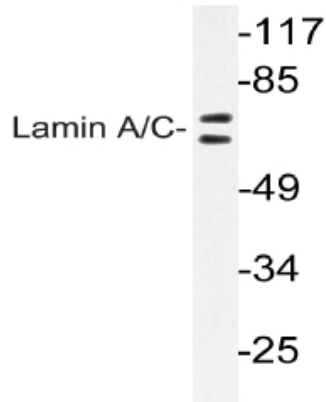
Background:

A unique family of cysteine proteases has been described that differs in sequence, structure and substrate specificity from any previously described protease family. This family, termed CED-3/ICE, functions as key components of the apoptotic machinery and act to destroy specific target proteins which are critical to cellular longevity. Nuclear lamins are critical to maintaining the integrity of the nuclear envelope and cellular morphology.

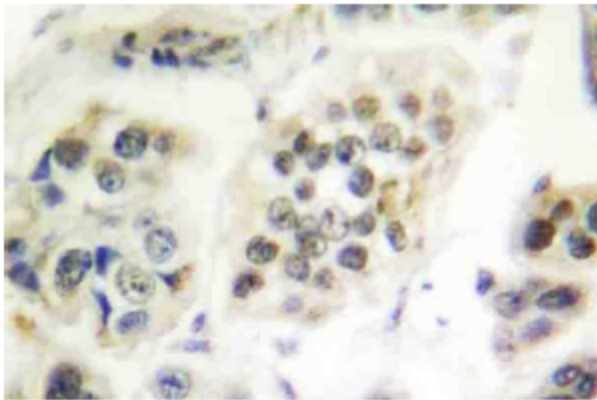
Synonyms:

LMNA, LMN1, 70 kDa Lamin, NY-REN-32, NYREN32, Lamin-A/C, Lamin A, Lamin A + C, Nuclear Envelope Marker

Product images:



Western blot (WB) analysis of Lamin A/C antibody in HeLa cells.



Immunohistochemistry (IHC) analyzes of Lamin A/C antibody in paraffin-embedded human breast carcinoma tissue.