

Product datasheet for **AP06430PU-N**

GRK2 Rabbit Polyclonal Antibody

Product data:

Product Type:	Primary Antibodies
Applications:	IHC, WB
Recommended Dilution:	Western blot: 1/500-1/1000. Immunohistochemistry on paraffin sections: 1/50-1/200.
Reactivity:	Human, Mouse, Rat
Host:	Rabbit
Clonality:	Polyclonal
Immunogen:	Synthetic peptide, corresponding to the N-terminal of Human GRK2.
Specificity:	This antibody detects endogenous levels of GRK2 protein. (region surrounding Thr23)
Formulation:	Phosphate buffered saline (PBS), pH 7.2. State: Aff - Purified State: Liquid purified Ig fraction Preservative: 0.05% sodium azide
Concentration:	1.0 mg/ml
Purification:	Affinity-chromatography using epitope-specific immunogen and the purity is > 95% (by SDS-PAGE)
Conjugation:	Unconjugated
Storage:	Store undiluted at 2-8°C for one month or (in aliquots) at -20°C for longer. Avoid repeated freezing and thawing.
Stability:	Shelf life: one year from despatch.
Predicted Protein Size:	~ 80 kDa
Gene Name:	G protein-coupled receptor kinase 2
Database Link:	Entrez Gene 156 Human P25098



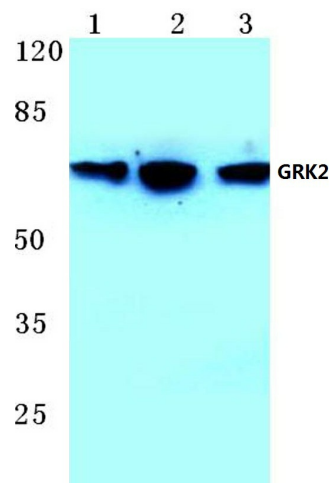
[View online »](#)

Background:

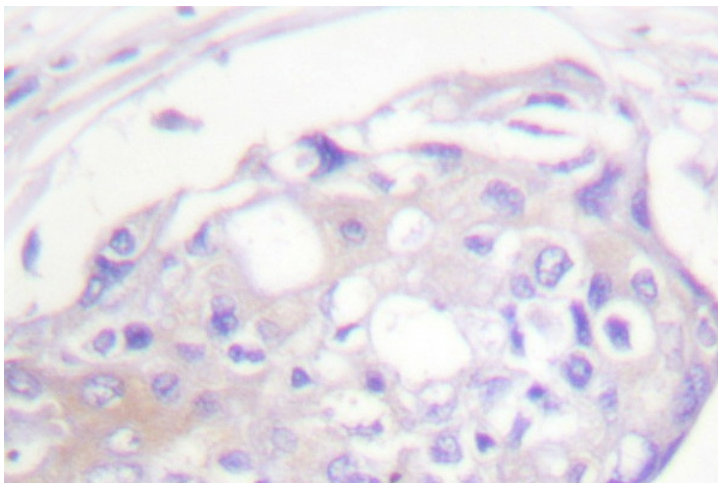
Heterotrimeric G protein-mediated signal transduction is a dynamically regulated process with the intensity of signal decreasing over time despite the continued presence of the agonist. This phenomenon, referred to as agonist-mediated desensitization, involves phosphorylation of the receptor by two classes of enzymes. The first are the second messenger-regulated kinases such as c-AMP dependent protein kinase A and protein kinase C. The second are the G protein-coupled receptor kinases (GRKs). At least seven members of the GRK family have been identified. These include rhodopsin kinase, GRK 1; two forms of β -adrenergic receptor kinase, GRK 2 (β ARK, β ARK1) and GRK 3 (β ARK2); IT-11 (GRK 4); GRK 5, GRK 6 and GRK 7. Phosphorylation of receptors by GRKs appears to be strictly dependent on the receptor being in its agonist-activated state.

Synonyms:

BARK, BARK1, GRK2, Beta-adrenergic receptor kinase 1

Product images:

Western blot (WB) analysis of GRK2 antibody at 1/500 dilution Lane 1:HEK293T whole cell lysate Lane 2:Mouse kidney tissue lysate Lane 3:Rat kidney tissue lysate



Immunohistochemistry (IHC) analyzes of GRK2 antibody in paraffin-embedded human breast carcinoma tissue.