

Product datasheet for **AP06427PU-N**

CBL Rabbit Polyclonal Antibody

Product data:

| | |
|-------------------------|---|
| Product Type: | Primary Antibodies |
| Applications: | IHC, WB |
| Recommended Dilution: | Western blot: 1/500-1/1000. Immunohistochemistry on paraffin sections: 1/50-1/200. |
| Reactivity: | Human, Mouse, Rat |
| Host: | Rabbit |
| Clonality: | Polyclonal |
| Immunogen: | Synthetic peptide, corresponding to amino acids 638-690 of Human Cbl. |
| Specificity: | This antibody detects endogenous levels of CBL protein. (region surrounding Ser668) |
| Formulation: | Phosphate buffered saline (PBS), pH 7.2. State: Aff - Purified State: Liquid purified Ig fraction Preservative: 0.05% sodium azide |
| Concentration: | 1.0 mg/ml |
| Purification: | Affinity-chromatography using epitope-specific immunogen and the purity is > 95% (by SDS-PAGE) |
| Conjugation: | Unconjugated |
| Storage: | Store undiluted at 2-8°C for one month or (in aliquots) at -20°C for longer. Avoid repeated freezing and thawing. |
| Stability: | Shelf life: one year from despatch. |
| Predicted Protein Size: | ~ 100, 120 kDa |
| Gene Name: | Cbl proto-oncogene |
| Database Link: | Entrez Gene 867 Human P22681 |



[View online »](#)

Background:

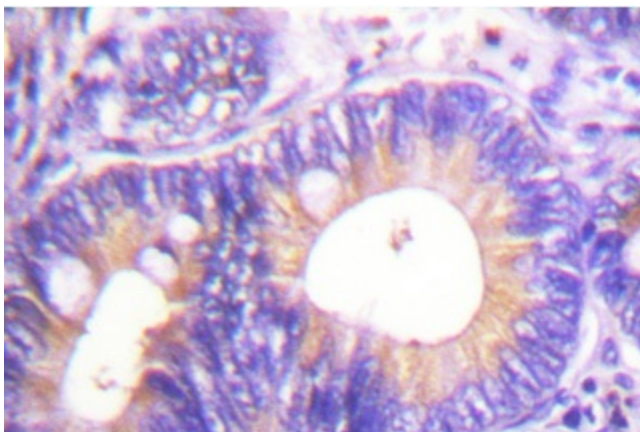
Cbl (also designated the c-Cbl proto-oncogene, E3 ubiquitin-protein ligase CBL, Casitas B-lineage lymphoma proto-oncogene and RING finger protein 55) has been identified as the cellular homolog of the v-Cbl oncogene isolated from an NFS/N mouse that developed a pre-B cell lymphoma following infection with the replication-competent Cas Br-M murine leukemic virus. c-Cbl is expressed at relatively high levels in a wide range of hematopoietic tumor cell lines as well as in normal tissues such as thymus and testis. The c-Cbl gene product has been identified as a cytoplasmic protein with apparent DNA binding and dimerization domains characteristic of transcription factors. A single c-Cbl locus termed CBL2 has been mapped to human chromosome 11q23. This region of chromosome 11 is involved in translocations and deletions in a broad range of leukemias; c-Cbl has been found to be translocated from chromosome 11 in leukemias with either t(4;11) or t(11;14) abnormalities. Two proteins related to c-Cbl have been identified as Cbl-b (RING finger protein 56) and Cbl-3 (RING finger protein 57). Cbl-b has a proline-rich domain, a nuclear localization signal, a C3HC4 zinc finger and a putative leucine zipper. Cbl-b is expressed in normal and malignant mammary epithelial cells, various normal tissues and hematopoietic tissue and cell lines. Data suggests that Cbl-b encodes a protein that can interact with signal transduction proteins to regulate their function or be regulated by them.

Synonyms:

RING finger protein 55, CBL2, c-CBL

Product images:

Western blot (WB) analysis of CBL antibody in extracts from HepG2 cells treated with Na₂VO₃ 0.3nM 40'.



Immunohistochemistry (IHC) analyzes of CBL antibody in paraffin-embedded human colon carcinoma tissue.