

Product datasheet for **AP06425PU-S**

Calnexin (CANX) Rabbit Polyclonal Antibody

Product data:

Product Type:	Primary Antibodies
Applications:	IF, IHC, WB
Recommended Dilution:	Western blot: 1/500-1/1000. Immunofluorescence: 1/50-1/200. Immunohistochemistry on Paraffin Sections: 1/50-1/200.
Reactivity:	Human, Mouse, Rat
Host:	Rabbit
Clonality:	Polyclonal
Immunogen:	Synthetic peptide, corresponding to amino acids 540-590 of Human Calnexin.
Specificity:	This antibody detects endogenous levels of Calnexin protein. (region surrounding Asp577)
Formulation:	Phosphate buffered saline (PBS), pH~7.2 State: Aff - Purified State: Liquid purified Ig fraction (> 95% pure by SDS-PAGE) Preservative: 0.05% Sodium Azide
Concentration:	1.0 mg/ml
Purification:	Affinity Chromatography using epitope-specific immunogen
Conjugation:	Unconjugated
Storage:	Store undiluted at 2-8°C for one month or (in aliquots) at -20°C for longer. Avoid repeated freezing and thawing.
Stability:	Shelf life: one year from despatch.
Predicted Protein Size:	~90 kDa
Gene Name:	calnexin
Database Link:	Entrez Gene 821 Human P27824



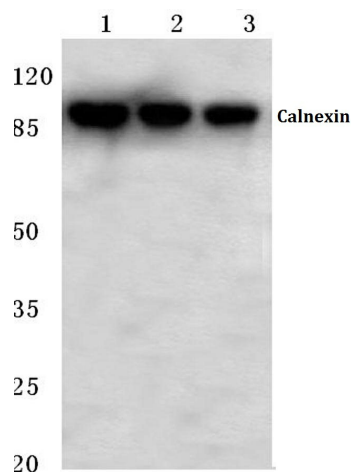
[View online »](#)

Background:

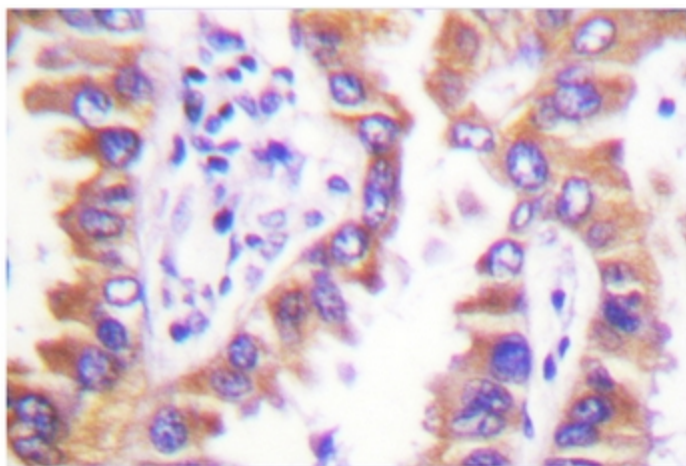
Calnexin and Calregulin (also called Calreticulin) are calcium-binding proteins that are localized to the endoplasmic reticulum—Calnexin to the membrane and Calregulin to the lumen. Calnexin is a type I membrane protein that interacts with newly synthesized glycoproteins in the endoplasmic reticulum. It may play a role in assisting with protein assembly and in retaining unassembled protein subunits in the endoplasmic reticulum. Calregulin has both low- and high-affinity calcium-binding sites. Neither Calnexin nor Calregulin contains the calcium-binding “E-F hand” motif found in calmodulins. Calnexin and Calregulin are important for the maturation of glycoproteins in the endoplasmic reticulum and appear to bind many of the same proteins.

Synonyms:

IP90, p90, CANX, ER Marker

Product images:

Western blot (WB) analysis of Calnexin antibody at 1/500 dilution Lane 1:A549 cell lysate Lane 2:Mouse liver tissue lysate Lane 3:Rat liver tissue lysate



Immunohistochemistry analysis of Calnexin antibody in paraffin-embedded human lung carcinoma tissue.