

Product datasheet for **AP06424PU-M**

Caldesmon (CALD1) Rabbit Polyclonal Antibody

Product data:

Product Type:	Primary Antibodies
Applications:	IF, IHC, WB
Recommended Dilution:	Western blot: 1/500-1/1000. Immunohistochemistry on paraffin sections 1/50-1/200. Immunofluorescence: 1/50-1/200.
Reactivity:	Human, Mouse, Rat
Host:	Rabbit
Clonality:	Polyclonal
Immunogen:	Synthetic peptide, corresponding to amino acids 750-800 of Human Caldesmon.
Specificity:	This antibody detects endogenous levels of Caldesmon protein. (region surrounding Ser783)
Formulation:	Phosphate buffered saline (PBS), pH~7.2 State: Aff - Purified State: Liquid purified Ig fraction (> 95% pure by SDS-PAGE). Preservative: 0.05% sodium azide
Concentration:	1.0 mg/ml
Purification:	Affinity Chromatography using epitope-specific immunogen.
Conjugation:	Unconjugated
Storage:	Store undiluted at 2-8°C for one month or (in aliquots) at -20°C for longer. Avoid repeated freezing and thawing.
Stability:	Shelf life: one year from despatch.
Predicted Protein Size:	70-80 kDa non-muscle 120-150 kDa smooth muscle
Gene Name:	caldesmon 1
Database Link:	Entrez Gene 800 Human Q05682



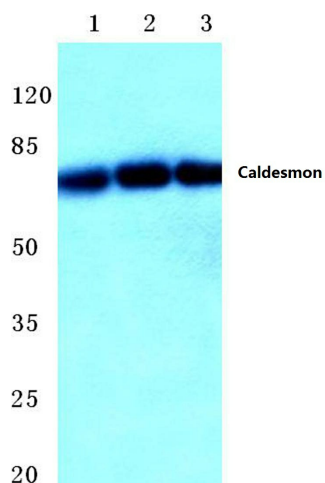
[View online »](#)

Background:

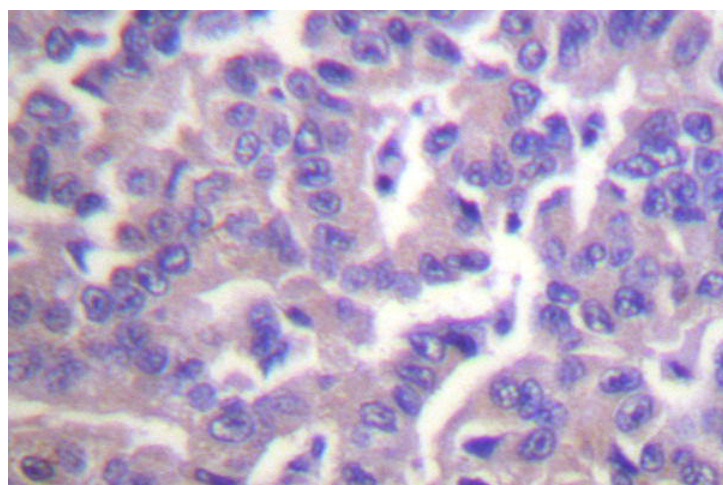
Caldesmon, Filamin 1, Nebulin and Villin are differentially expressed and regulated Actin binding proteins. Both muscular and non-muscular forms of Caldesmon have been identified and each has been shown to bind to Actin as well as to calmodulin and Myosin. Alternative splicing of the gene encoding Caldesmon results in five isoforms. Muscular Caldesmon (isoform 1), also designated high molecular weight Caldesmon or H-Caldesmon (H-CAD), is expressed predominantly on thin filaments in smooth muscle. Non-muscular Caldesmon (isoforms 2-5), also designated low molecular weight Caldesmon or L-Caldesmon (L-CAD), is widely expressed in non-muscle tissues and cells.

Synonyms:

CALD1, CAD, CDM

Product images:


Western blot (WB) analysis of Caldesmon antibody in extracts from HT-29 cells.



Immunohistochemistry (IHC) analyzes of Caldesmon antibody in paraffin-embedded human breast carcinoma tissue.