

## Product datasheet for **AP06422PU-S**

### **cPLA2 beta (PLA2G4B) Rabbit Polyclonal Antibody**

#### **Product data:**

Product Type:	Primary Antibodies
Applications:	IF, IHC, WB
Recommended Dilution:	<b>Western blot:</b> 1/500-1/1000. <b>Immunofluorescence:</b> 1/50-1/200. <b>Immunohistochemistry on Paraffin Sections:</b> 1/50-1/200.
Reactivity:	Human, Mouse, Rat
Host:	Rabbit
Clonality:	Polyclonal
Immunogen:	Synthetic peptide, corresponding to amino acids 480-530 of Human c-PLA2.
Specificity:	This antibody detects endogenous levels of c-PLA2 protein. (region surrounding asn499)
Formulation:	Phosphate buffered saline (PBS), pH 7.2 State: Aff - Purified State: Liquid purified Ig fraction(> 95% pure by SDS-PAGE). Preservative: 0.05% Sodium Azide
Concentration:	1.0 mg/ml
Purification:	Affinity Chromatography using epitope-specific immunogen.
Conjugation:	Unconjugated
Storage:	Store undiluted at 2-8°C for one month or (in aliquots) at -20°C for longer. Avoid repeated freezing and thawing.
Stability:	Shelf life: one year from despatch.
Predicted Protein Size:	~100 kDa
Gene Name:	phospholipase A2 group IVB
Database Link:	<a href="#">Entrez Gene 100137049 Human P0C869</a>



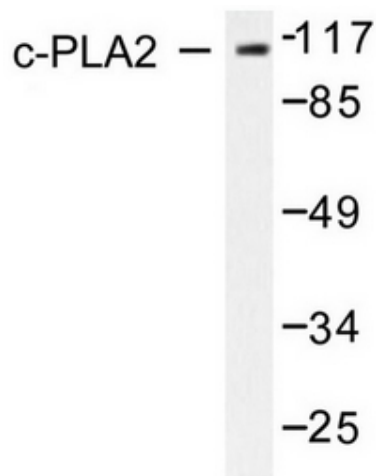
[View online »](#)

**Background:**

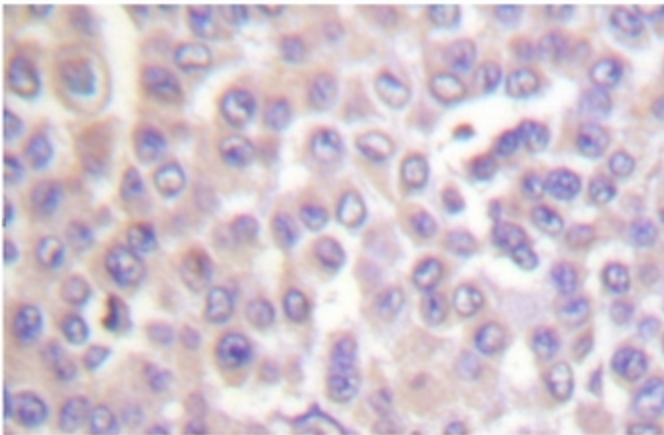
Phospholipase A2s (PLA2s) constitute a family of esterases that hydrolyze the sn-2-acyl ester bond in glycerophospholipid molecules. These enzymes are generally calcium-dependent and have been found both intra- and extracellularly. By hydrolyzing the sn-2 bond in glycerophospholipids, PLA2s release fatty acids. One such fatty acid, arachidonic acid, generates the substrates for the initiation of the arachidonic acid cascade that produces various eicosanoids (i.e. prostaglandins, leukotrienes and thromboxanes), many of which are potent mediators of inflammation. PLA2s include both the relatively low molecular weight type I and type II enzymes and the form known as cytoplasmic PLA2 (cPLA2). cPLA2 is present in the cytosol of various cells and tissues including platelets, macrophages and monoblasts; and preferentially hydrolyzes the sn-2 position of phospholipid molecules, releasing free arachidonate.

**Synonyms:**

cPLA2-beta, phospholipase A2 beta

**Product images:**

Western blot analysis of c-PLA2 antibody in extracts from HeLa cells treated with TNF- $\alpha$  20ng/ml 30' or NIH/3T3 cells treated with TNF- $\alpha$  20ng/ml 30'.



Immunohistochemistry analyzes of c-PLA2 antibody in paraffin-embedded human colon carcinoma tissue.